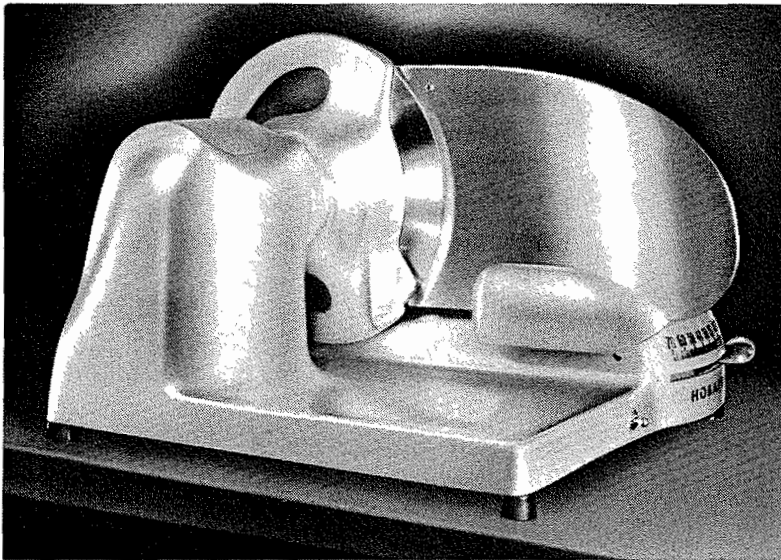


**HOBART**

**INSTRUCTION MANUAL**  
**... with Replacement Parts**



**MODEL 410 MEAT SLICER**

ML-16495

## Instructions for Operation and Care of HOBART MODEL 410 MEAT SLICER

### INSTALLATION:

When the machine is packed for shipment, the four rubber feet are removed and sent along in a cloth bag. These feet may be readily reassembled. Sometimes it may be necessary to use the machine on a narrow table or back bar which does not afford support for all four feet. In this case, one of the unsupported feet may be moved to the tapped hole near the center of the base, so that the machine rests on three feet. If the surface upon which the Slicer rests is uneven, adjust the feet by turning them slightly.

In ordinary service, it will not be necessary to fasten the Slicer down, as the cup-shaped rubber feet prevent slipping. For mounting on shipboard, discard the feet, and bolt to the table with 5/16"-18 Cap Screws.

Before plugging into an electric socket the first time make sure that the electric specifications of the motor are the same as those of your service. The electrical specifications are stamped on a plate (1) that is inside the grinder compartment.

**If cord and plug is not used with this machine electrical connections should be made by qualified workmen who will observe all applicable Safety Codes and the National Electrical Code.**

When the slicer is not in use, always keep the slice adjusting handle (2) at zero, so that the knife is fully guarded.

### THICKNESS OF SLICES:

Movement of the handle (2) adjust the thickness of the slices. To cut dried beef, set at No.1 or about half way between zero and the first line. For slicing bacon, set at 6 or 8, or wherever your customer likes it.

### SLICING FOODS:

Put the bacon or material to be sliced in the carriage at (3), and lower the meat grip (4) upon it. Then start the motor and set the slice adjustment at the desired figure.

When slicing, stand at the adjusting end of the machine and grasp the handle (5) with your right hand. In this way you can feed the meat toward the gauge plate and slide the carriage back and forth past the revolving knife with the right hand while the left is free to arrange the slices on the receiving tray as they come from the knife.

As the meat is cut away, lift the grip and move it farther back for a new hold. When the meat

remaining is only a few inches long, set the grip behind it and you can cut up to the last slice.

To hold the grip out of the carriage, lift it up as far as it will go and then slide it in toward the knife until it engages the lock pin.

### CLEANING & SANITIZING:

Unplug electrical power cord and clean the surface of the machine daily. Make sure the Knife guards are in place and the slice adjusting knob is at zero when performing this operation.

**WARNING:** Observe the same care while working around the knife that you would use with any sharp-edged tool.

### PROCEDURE:

1. Materials required:
  - 1.1 Small plastic two compartment pail.
  - 1.2 Clean cloths.
  - 1.3 Cleaner ("Soilax" All Purpose Cleaner).
  - 1.4 Sanitizer ("Mikro-Klene" iodophor sanitizer).
2. Cleaning (using "Soilax" and "Mikro-Klene"):
  - 2.1 Add two ounces of "soilax" All Purpose Cleaner to a gallon of hot water in wash side of two compartment pail.
  - 2.2 Mix rinse solution by adding two teaspoons of "Mikro-Klene" in one gallon of cool water in rinse side of pail.
  - 2.3 Wipe off large scraps of meat soil.
  - 2.4 Dip cloth into cleaning solution, then wring out cloth. Wipe the entire outside of slicer with cloth. Be sure to CAREFULLY wipe the gauge plate.
  - 2.5 Remove guards (see page 3).
  - 2.6 Carefully wash the front and rear of the knife with cloth that has been dipped in the cleaning solution.
  - 2.7 Wash the upper and lower guards.
  - 2.8 Rinsing and sanitizing can be done by going over all cleaned surfaces with a cloth that has been soaked in "Mikro-Klene" rinse solution and wrung out enough so that the solution does not run over the machine but still leaves it wet.
  - 2.9 Reassemble the lower knife guard, then the upper knife guard. Lock in place.
  - 2.10 Allow all surfaces to dry. Do not wipe. Cover slicer until next use.

2.11 Cloth used for rinsing should be sent to laundry, or discarded. Wash out pails.

**CAUTION:** Do NOT wash polished aluminum parts in dish or pan washer.

**SHARPENING:**

To sharpen the knife, follow the instructions below. Directions are also given here for removing the guards.

**ADJUSTING FOR WEAR:**

After many knife sharpenings, the gauge plate should be moved forward toward the knife. The knife edge angle can also be changed. Gauge plate screw heads are currently plugged and the gauge plate is sealed to the base to meet NSF approval. A center punch should be used to deflect the center of the plugs for removal. After gauge plate is moved forward it should be resealed at the base and the screw head plugs should be flattened and resealed to again meet NSF approval. Have a Hobart service technician perform these operations.

When the knife has been ground down to a diameter of 9-1/2 inches, it should be replaced by a new knife.

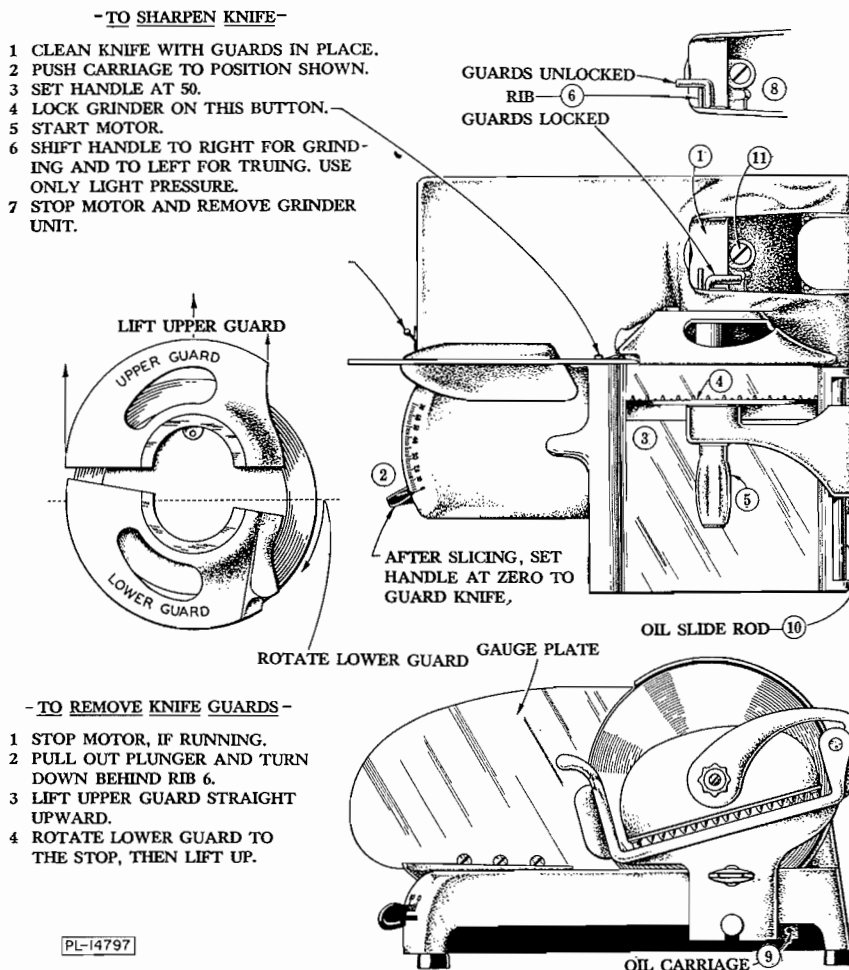
**LUBRICATION:**

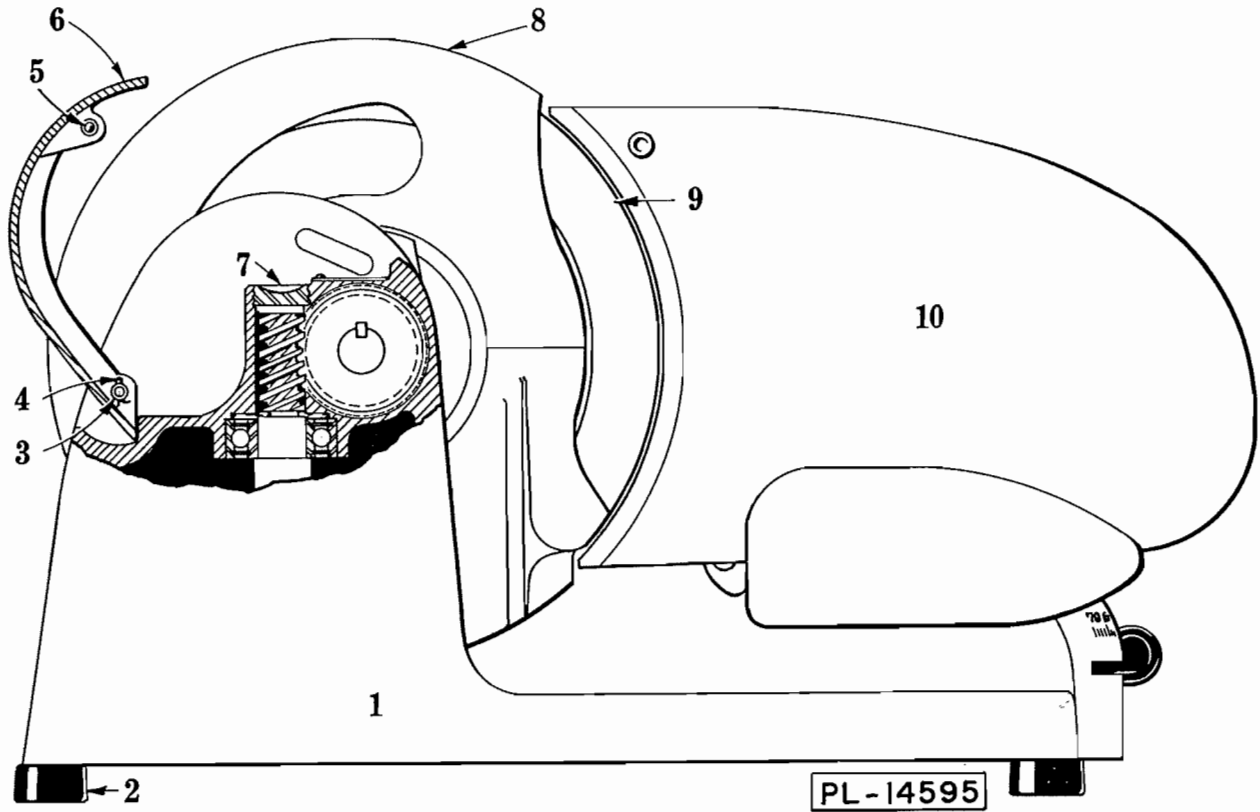
Very little lubrication is needed. The carriage slide rods are oiled by a wick system. Add a few drops of oil, such as Texaco "Havoline" at (9), once a month. An occasional drop of tasteless oil will be needed on the carriage slide rod (10) also.

The motor bearings and the knife shaft bearings are packed with grease and will not need additional lubricant the first year. After that a teaspoonful of grease may be added annually at (11). See Hobart lubrication chart for grease recommendations.

**MOTOR:**

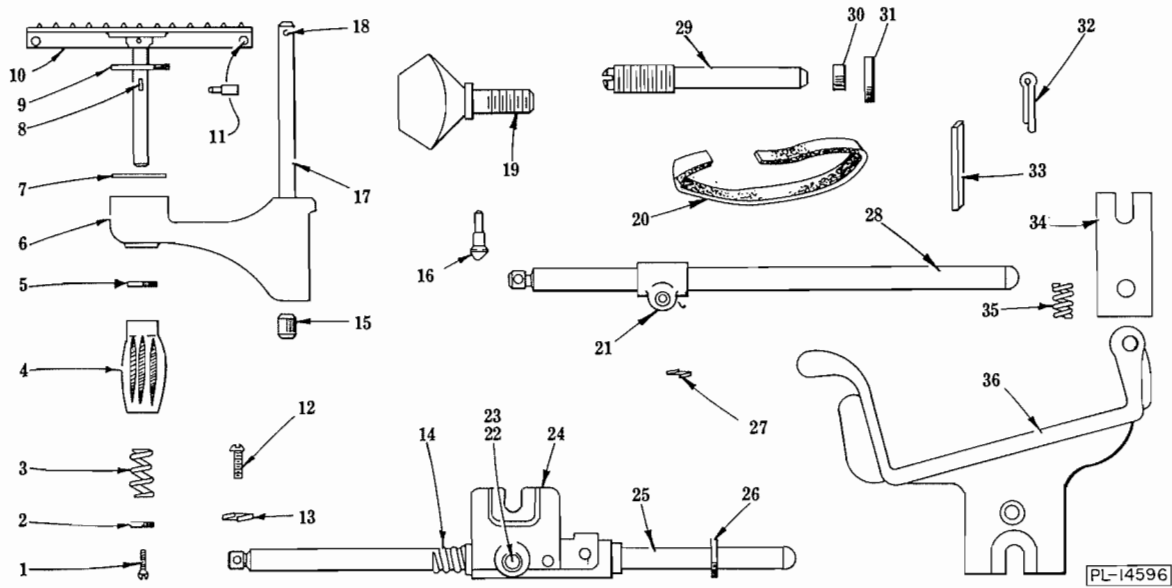
Motor parts are listed on separate motor Replacement Parts Sheet.





BASE UNIT

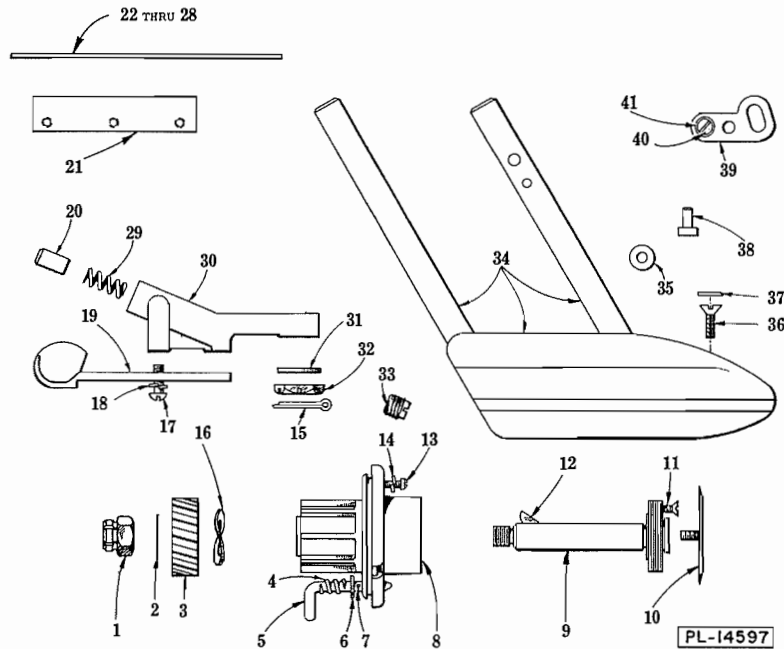
| ILLUS. | PART NO.  | NAME OF PART                                      | AMT. |
|--------|-----------|---|------|
| 1      | A-107538  | Base & Logo Sub-Assy. (Incls. items #3, 4, 5 & 6) | 1    |
| 2      | B-18682-1 | Foot  | 4    |
| 3      | V-18947   | Pin - Hinge                                       | 1    |
| 4      | PC-3-15   | Cotter Pin - 1/16" x 5/16"                        | 2    |
| 5      | M-79686   | Catch - Friction                                  | 2    |
| 6      | D-121658  | Lid - Grinder Housing                             | 1    |
| 7      | V-18958   | Plug - Special                                    | 1    |
| 8      | A-103763  | Knife Guard Assy.                                 | 1    |
| 9      | S-14125   | Knife   | 1    |
| 10     | S-111229  | Gauge Plate & Pin Assy.                           | 1    |



CARRIAGE UNIT

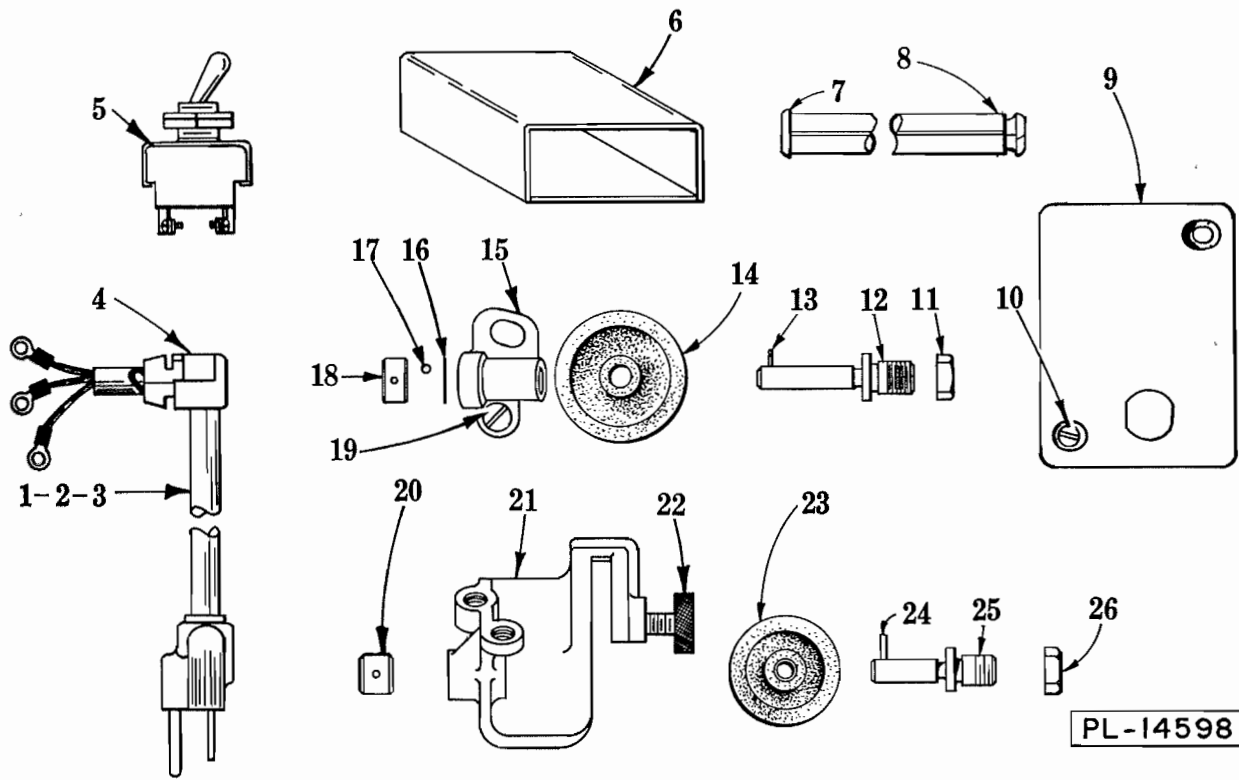
| ILLUS.<br>PL-14596 | PART<br>NO. | NAME OF PART  | AMT.      |
|--------------------|-------------|---|-----------|
| 1                  | SC-15-34    | Mach. Screw - #10-24 x 1/2" Oval Hd.                      | 1         |
| 2                  | V-10949-1   | Washer  | 1         |
| 3                  | V-10818-1   | Spring  | 1         |
| 4                  | M-13180-1   | Handle - Carriage   | 1         |
| 5                  | WS-8-17     | Washer  | 1         |
| 6                  | A-87813     | Carriage Arm & Bushing Sub-Assy. (Incls. item #15)        | 1         |
| 7                  | V-19243-2   | Washer (1/16" Thk.)                                       | As Req'd. |
| 8                  | KW-3-5      | Key - #405 Woodruff                                       | 1         |
| 9                  | V-19243-1   | Washer (1/32" Thk.)                                       | 1         |
| 10                 | B-103287    | Meat Grip Sub-Assy.                                       | 1         |
| 11                 | M-18917-2   | Slide - Meat Grip   | 2         |
| 12                 | SC-8-50     | Mach. Screw - #12-24 x 5/8" Rd. Hd.                       | 2         |
| 13                 | WL-3-28     | Lock Washer - #12 x .062" x .047"                         | 2         |
| 14                 | V-18902     | Spring - Bumper   | 2         |
| 15                 | C-108394-32 | Bushing (Carriage Arm)                                    | 2         |
| 16                 | M-21083     | Pin - Latch (Carriage Arm)                                | 1         |
| 17                 | V-18953-1   | Rod - Slide (Carriage Tray)                               | 1         |
| 18                 | SC-8-11     | Mach. Screw - #10-24 x 3/4" Rd. Hd.                       | 1         |
| 19                 | C-108197-13 | Thumb Screw Assy.   | 1         |
| 20                 | V-18921     | Wicking   | 1         |
| 21                 | V-18895-1   | Bearing - Carriage (Small)                                | 1         |
| 22                 | M-111251    | Stud - Carriage Tray Support                              | 1         |
| 23                 | NS-17-15    | Jam Nut - 3/8"-16 Hex Fin.                                | 1         |
| 24                 | P-24126     | Large Carriage Bearing Assy. Unit (Incls. items #22 & 23) | 1         |
| 25                 | P-23417-2   | Rod - Slide (Long)  | 1         |
| 26                 | V-18946-1   | Washer - Bumper   | 2         |
| 27                 | WL-3-22     | Lock Washer - #10 x .055" x .040"                         | 1         |
| 28                 | P-23418-2   | Rod - Slide (Short)                                       | 1         |
| 29                 | V-18908     | Stud - Pivot (Carriage Brg.)                              | 1         |
| 30                 | V-20390     | Cushion - Carriage Brg.                                   | 2         |
| 31                 | WS-4-47     | Washer  | 2         |
| 32                 | PC-3-36     | Cotter Pin - 3/32" x 1"                                   | 2         |
| 33                 | V-18922     | Strip - Retaining   | 1         |
| 34                 | M-24038     | Bar - Clamp   | 1         |
| 35                 | V-20598     | Spring - Clamp Bar  | 1         |
| 36                 | R-24100     | Carriage Tray Assy. Unit (Incls. items #16, 19, 34 & 35)  | 1         |

410 REPLACEMENT PARTS



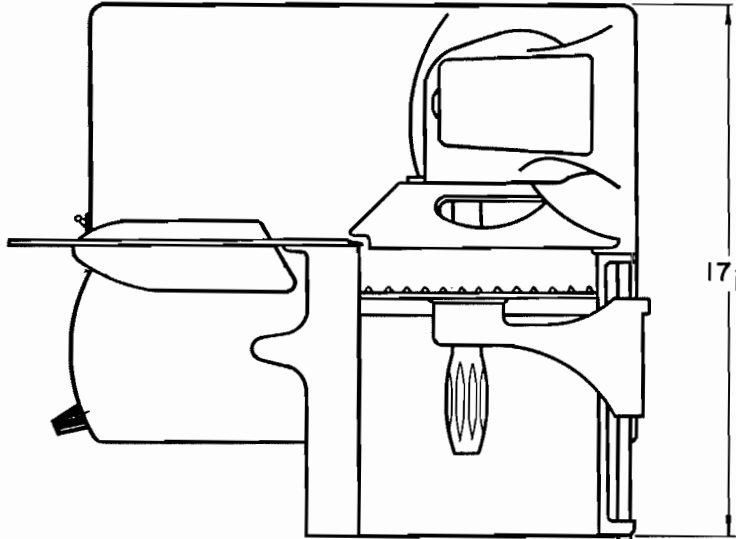
KNIFE HUB AND GAUGE PLATE ADJ. UNIT

| ILLUS. NO. | PART NO.   | NAME OF PART  | AMT.      |
|------------|------------|---|-----------|
| 1          | NS-32-29   | Stop Nut - 1/2" "Flexloc"                               | 1         |
| 2          | WS-8-9     | Washer  | 1         |
| 3          | M-18903    | Gear - Spiral (26T)                                     | 1         |
| 4          | V-18945    | Spring - Plunger  | 1         |
| 5          | V-18914    | Plunger - Knife Guard                                   | 1         |
| 6          | WS-4-17    | Washer  | 1         |
| 7          | PG-3-7     | Groov-Pin - Type #1, 3/32" x 7/16"                      | 1         |
| 8          | B-121070   | Hub - Knife Shaft                                       | 1         |
| 9          | P-18900    | Shaft - Knife   | 1         |
| 10         | P-66648    | Disc - Cover  | 1         |
| 11         | SC-22-39   | Cap Screw - 1/4"-20 x 5/8" Flat Hd.                     | 3         |
| 12         | KW-3-5     | Key - #405 Woodruff (60 Hz. & D. C.)                    | 1         |
| 13         | SC-11-63   | Mach. Screw - #12-24 x 1" Fil. Hd.                      | 4         |
| 14         | WL-3-28    | Lock Washer - #12 x .062" x .047"                       | 4         |
| 15         | PC-4-18    | Cotter Pin - 3/32" x 1-1/4"                             | 1         |
| 16         | M-21881    | Washer - Wave   | 1         |
| 17         | SC-8-10    | Mach. Screw - #10-24 x 1/2" Rd. Hd.                     | 2         |
| 18         | WL-3-22    | Lock Washer - #10 x .055" x .040"                       | 2         |
| 19         | C-120871   | Handle - Adjusting                                      | 1         |
| 20         | V-18920    | Plug - Friction   | 1         |
| 21         | V-18919    | Strip - Ret. (Gauge Plate)                              | 1         |
| 22         | B-122559-1 | Shim - Ret. Strip (.0075" Thk.)                         | As Req'd. |
| 23         | B-122559-2 | Shim - Ret. Strip (.010" Thk.)                          | As Req'd. |
| 24         | B-122559-3 | Shim - Ret. Strip (.0125" Thk.)                         | As Req'd. |
| 25         | B-122573-1 | Shim - Ret. Strip (.002" Thk.)                          | As Req'd. |
| 26         | B-122573-2 | Shim - Ret. Strip (.003" Thk.)                          | As Req'd. |
| 27         | B-122573-3 | Shim - Ret. Strip (.004" Thk.)                          | As Req'd. |
| 28         | B-122573-4 | Shim - Ret. Strip (.005" Thk.)                          | As Req'd. |
| 29         | V-18949    | Spring - Friction Plug                                  | 1         |
| 30         | P-18893    | Arm - Adjusting   | 1         |
| 31         | WS-8-9     | Washer  | 1         |
| 32         | V-14198    | Nut - Special   | 1         |
| 33         | V-18950    | Stud - Friction Plug Adjusting                          | 1         |
| 34         | D-120447   | Base & Slide Rod Assy.                                  | 1         |
| 35         | WS-2-18    | Washer  | 2         |
| 36         | SC-22-26   | Mach. Screw - #12-24 x 1/2" Flat Hd.                    | 3         |
| 37         | M-80926    | Plug (Covers Screw Head) (See Instructions For Removal) | 3         |
| 38         | V-18952    | Roller - Adj. Plate                                     | 1         |
| 39         | M-18951    | Plate - Adjusting                                       | 1         |
| 40         | SC-13-49   | Mach. Screw - #10-24 x 5/8" Flat Hd.                    | 1         |
| 41         | WL-9-1     | Lock Washer - #10 Csk. Shakeproof                       | 1         |

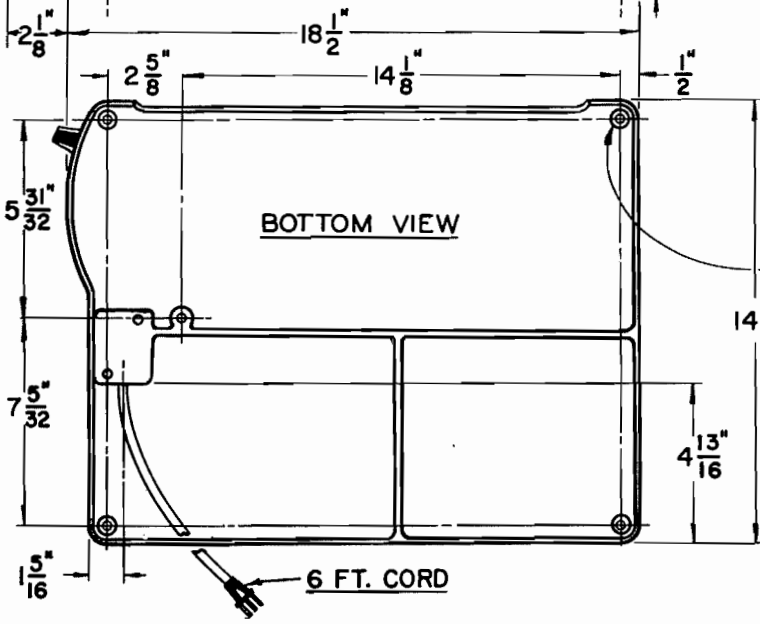
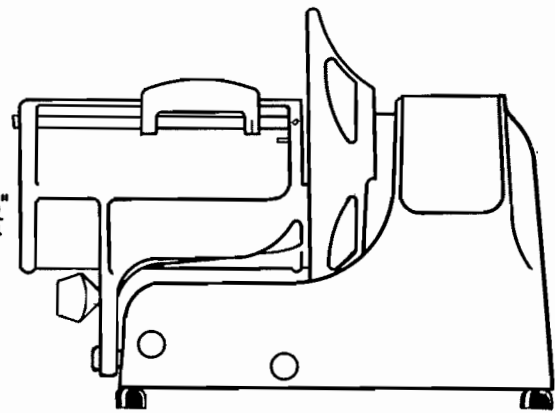
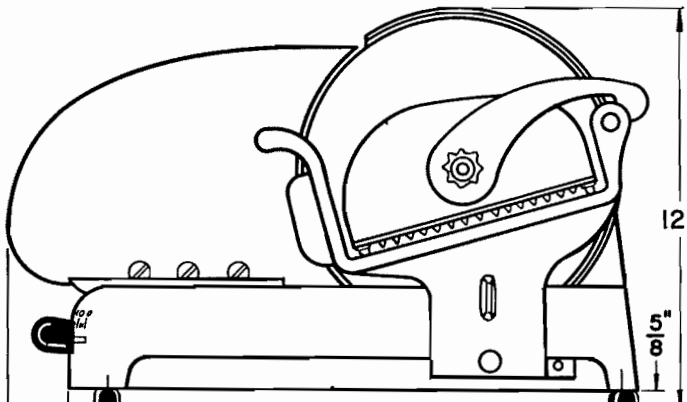


GRINDER AND SWITCH UNITS

| ILLUS. NO. | PART NO.      | NAME OF PART  | AMT. |
|------------|---------------|---|------|
| 1          | B-117542-7    | Cord & Plug (3 Cond., Under 150 V.)   | 1    |
| 2          | B-117542-12   | Cord & Plug (3 Cond., 200-250 V.)   | 1    |
| 3          | B-117542-17   | Cord Assy. (I.E.C.)   | 1    |
| 4          | FE-15-5       | Strain Relief   | 1    |
| 5          | P-87711-145-1 | Switch  | 1    |
| 6          | B-120857      | Insulator - Switch  | 1    |
| 7          | BF-2-1        | Bushing - 3/8" Anti-Short   | 2    |
| 8          | V-18943-1     | Conduit (60 Hz.)  | 1    |
| 9          | B-122774      | Cover - Switch Box  | 1    |
| 10         | SC-13-37      | Mach. Screw - #8-32 x 3/8" Flat Hd.   | 2    |
| 11         | V-18944-2     | Nut - Wheel Retaining   | 1    |
| 12         | M-120233      | Shaft - Grinding Wheel  | 1    |
| 13         | PG-3-8        | Groov-Pin - Type #1, 3/32" x 1/2"   | 1    |
| 14         | V-18880       | Wheel - Grinding  | 1    |
| 15         | P-24408       | Carrier - Grinding Wheel  | 1    |
| 16         | WS-3-40       | Washer  | 1    |
| 17         | BA-2-1        | Ball - 1/8" Dia. Steel  | 9    |
| 18         | V-13199       | Collar - Grinding Shaft   | 1    |
| 19         | SC-8-10       | Mach. Screw - #10-24 x 1/2" Rd. Hd.   | 2    |
| 20         | V-18912       | Collar - Thrust   | 1    |
| 21         | P-18892       | Carrier - Truing Wheel  | 1    |
| 22         | V-18911       | Thumb Screw - 1/4"-20   | 1    |
| 23         | V-18881       | Wheel - Truing  | 1    |
| 24         | PG-3-7        | Groov-Pin - Type #1, 3/32" x 7/16"  | 1    |
| 25         | V-18913       | Shaft - Truing Wheel  | 1    |
| 26         | V-18944-1     | Nut - Wheel Retaining   | 1    |
|            | M-120280      | Grinding Wheel Carrier Sub-Assy. Unit (Incls. items #12, 13, 15, 16, 17 & 18) | 1    |
|            | M-61740       | Sharpening Unit Sub-Assy. (Incls. items #11 thru 26)                          | 1    |



**WARNING**  
ELECTRICAL CONNECTIONS SHOULD BE MADE  
IN ACCORDANCE WITH THE NATIONAL  
ELECTRICAL CODE



FIVE 5/16"-18 HOLES  
 FOR FEET

P-20637

PL-14798

INSTALLATION DIAGRAM