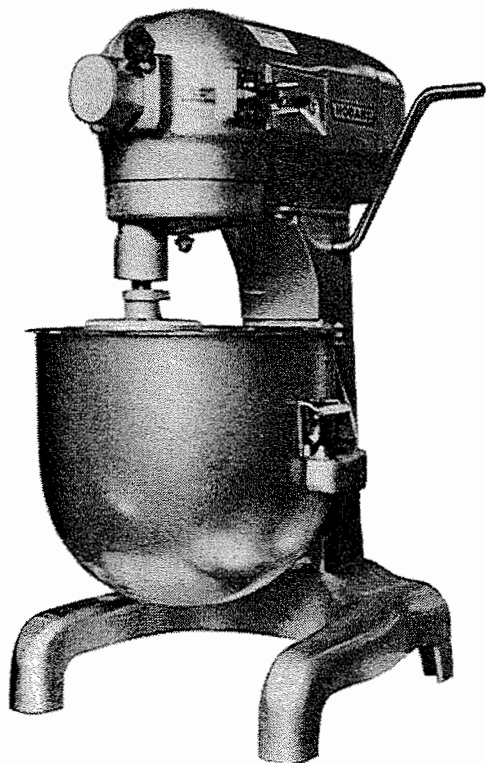


**HOBART**

**INSTRUCTION MANUAL**  
**... with Replacement Parts**



**MODEL A-200 MIXER**

(INCLUDES MOTOR PARTS)

ML-25278

- THIS PAGE INTENTIONALLY LEFT BLANK -

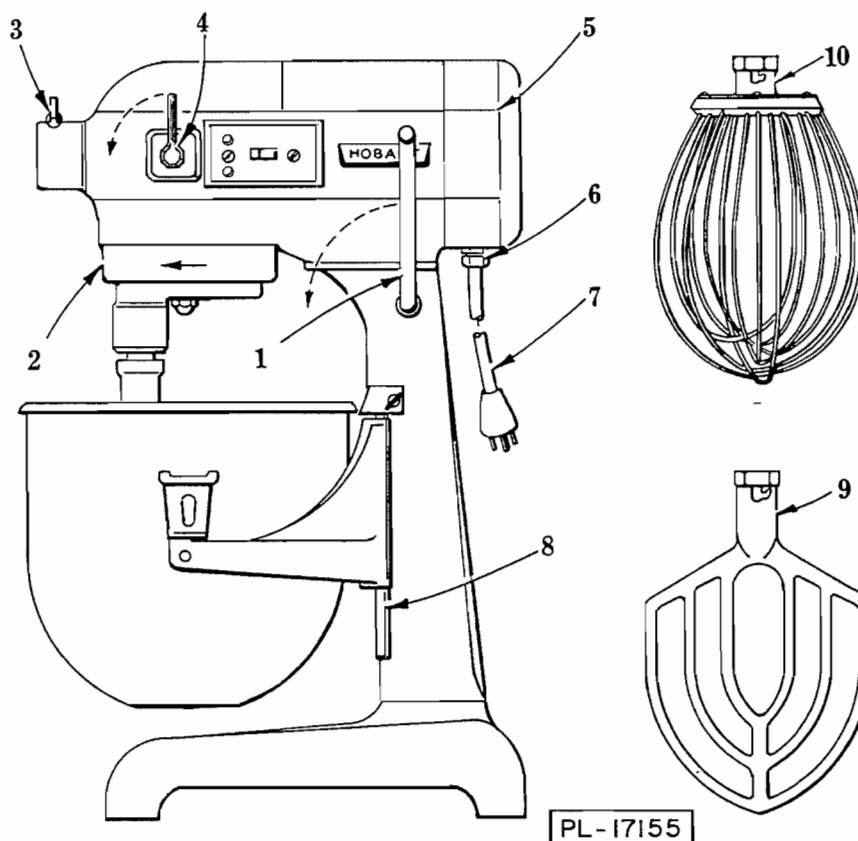


Fig. 1

## Instructions for Operation and Care of MODEL A-200 HOBART MIXER

### INSTALLATION:

If cord and plug is not used with this machine, electrical connections should be made by qualified workmen who will observe all applicable Safety Codes and the National Electrical Code.

Before making electrical connections, CHECK THE SPECIFICATIONS ON THE NAME PLATE TO MAKE SURE THEY AGREE WITH THOSE OF YOUR ELECTRICAL SERVICE.

A cord and plug (7, Fig. 1) is furnished as standard equipment on this mixer (except for three phase current). The electrical outlet (6, Fig. 1) is tapped

for 1/2" conduit should a permanent installation be desired.

Multiphase motors should be connected so that the planetary will revolve in the direction of the arrow in the illustration.

**NOTICE:** If the Speed Drive Attachment is to be used (with the 9" Vegetable Slicer), this mixer MUST be bolted down.

### OPERATION:

Set the shifter handle (4, Fig. 1) at the desired speed and turn on the switch to start the motor.

### LUBRICATION:

The motor (5, Fig. 1) has grease packed ball bearings so will require little attention. The transmission gearing is packed with special grease that will last for several years. When grease is needed for replacement, it should be ordered from your local Hobart Representative. Lubricate the bowl slideways (8, Fig. 1) occasionally by applying a small amount of Lubriplate 630AA grease with the tip of the finger.

The polished drip cup (2, Fig. 1) is a safe-guard to prevent any lubricant that might work out of the planetary gearing from dropping into the bowl. Remove the drip cup (by pulling straight down) once a month and wipe it clean.

### SPEED CONTROL:

To change speeds, first turn off the motor, then move the shifter handle (4, Fig. 1) to the desired speed. In the illustration the shifter handle is set at number 3 or high speed.

Use number 3 speed for fast, light work as whipping cream, beating eggs and mixing thin batters.

Number 1 or slow speed is for heavy mixtures, like breakfast rolls, etc. Also use this speed for the food chopper attachment (see attachments). In many mixing operations it is customary to start on Number 1 and then change to a higher speed as the work progresses.

### BOWL LIFT:

Pull the lift handle (1, Fig. 1) forward to lower the bowl. It is necessary to lower the bowl to change agitators, this also makes the bowl more accessible for filling. When raising the bowl, move the lift handle a little beyond the vertical center until you feel it touch the stop. To mash potatoes, or to cream butter, start with the bowl down and raise it slowly into working position, while the agitator is rotating.

### AGITATORS:

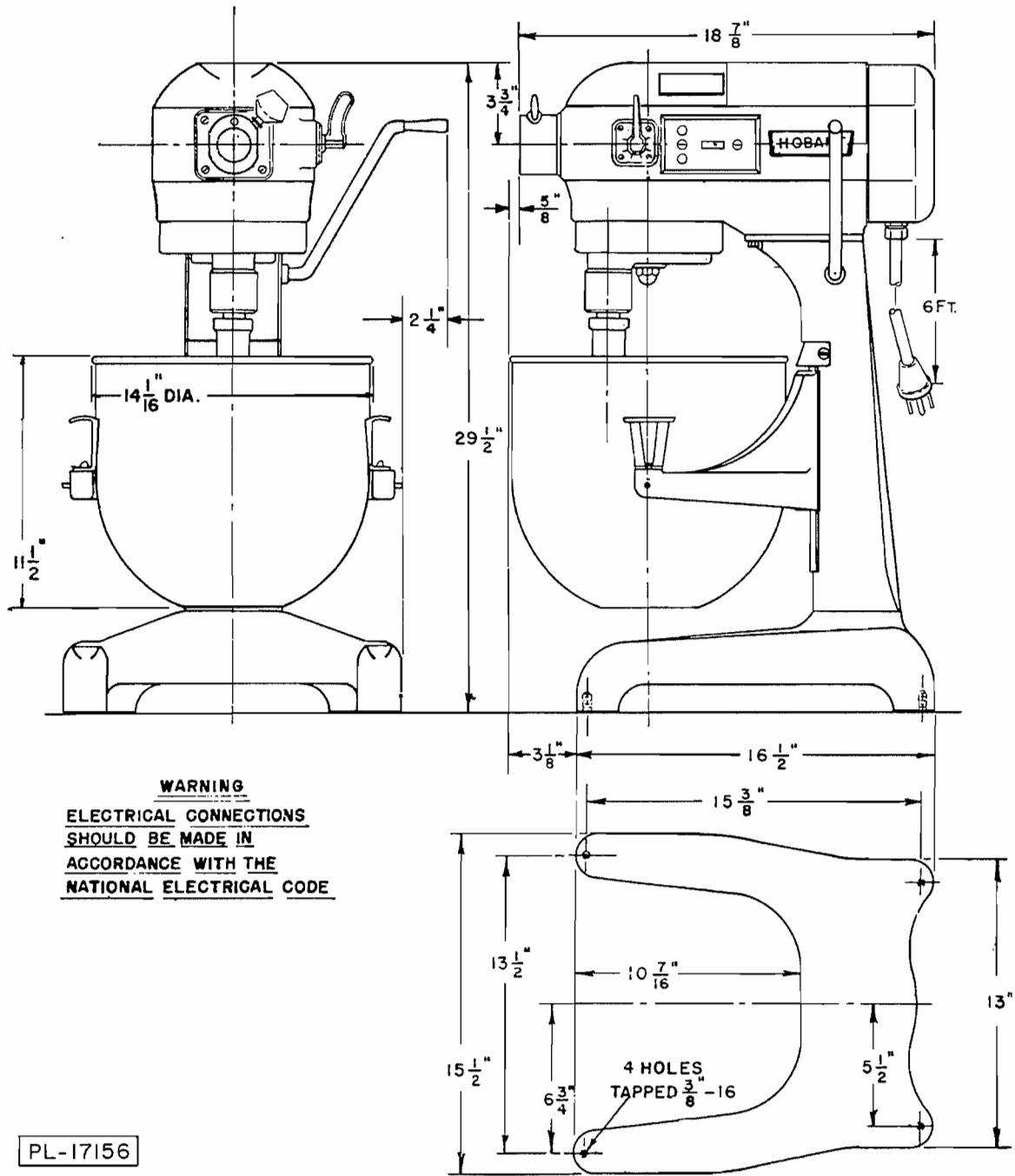
When attaching an agitator the bowl must be in the down position. Slip the agitator up on the shaft and turn it until the driving pin in the shaft reaches the L-shaped slot in the agitator shank. Agitators which may be used with this mixer are shown on the last page of this manual.

The style "B" beater (9, Fig. 1) is commonly used for thin batters, cakes, and mashing potatoes. The style "D" whip (10, Fig. 1) is best for whipping cream and beating eggs. Two other styles frequently used are the "E" dough arm for heavy bread doughs, and the "P" pastry knife for cutting shortening into flour for pastry. The "S" beater is used for sweet dough and the "C" wing whip for heavy whipping.

### ATTACHMENTS & ACCESSORIES:

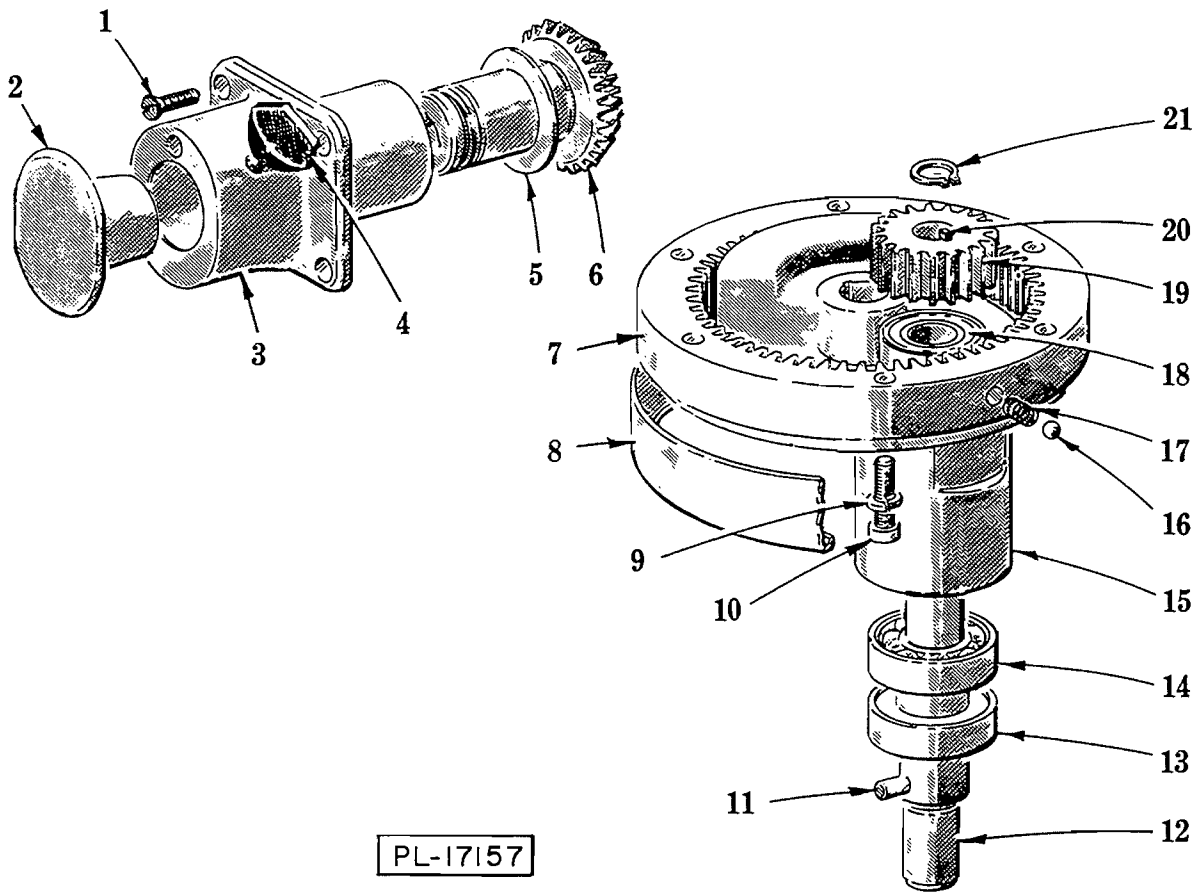
Various attachments and accessories are available for this machine, such as; Dicer, Vegetable Slicer & Shredder, Food Chopper, Soup Strainer and Colander, Oil Dropper, Tray Support, Bowl Jacket, combination Bowl Splash Cover and Extension Ring, Stainless Steel Table, Speed Drive and a full line of 12 qt. equipment. The attachment socket is for the size 12 attachments. Before putting an attachment into the socket, stop the motor, then insert with a slight twist toward the left so that the stop stud in the attachment is tight against the side of the hole that receives it. When in place tighten the thumb screw (3, Fig. 1).

The attachment drive has three speeds, governed by the shifter handle (4, Fig. 1) of the mixer. For most attachments set the handle at number 1. **THE CHOPPER ATTACHMENT MUST NEVER RUN FASTER THAN SPEED 1** when cutting meat, but when cutting vegetables it may run at the number 2 speed. Use the motor switch to start and stop attachments, and always stop the motor before changing the speed of an attachment.



PL-17156

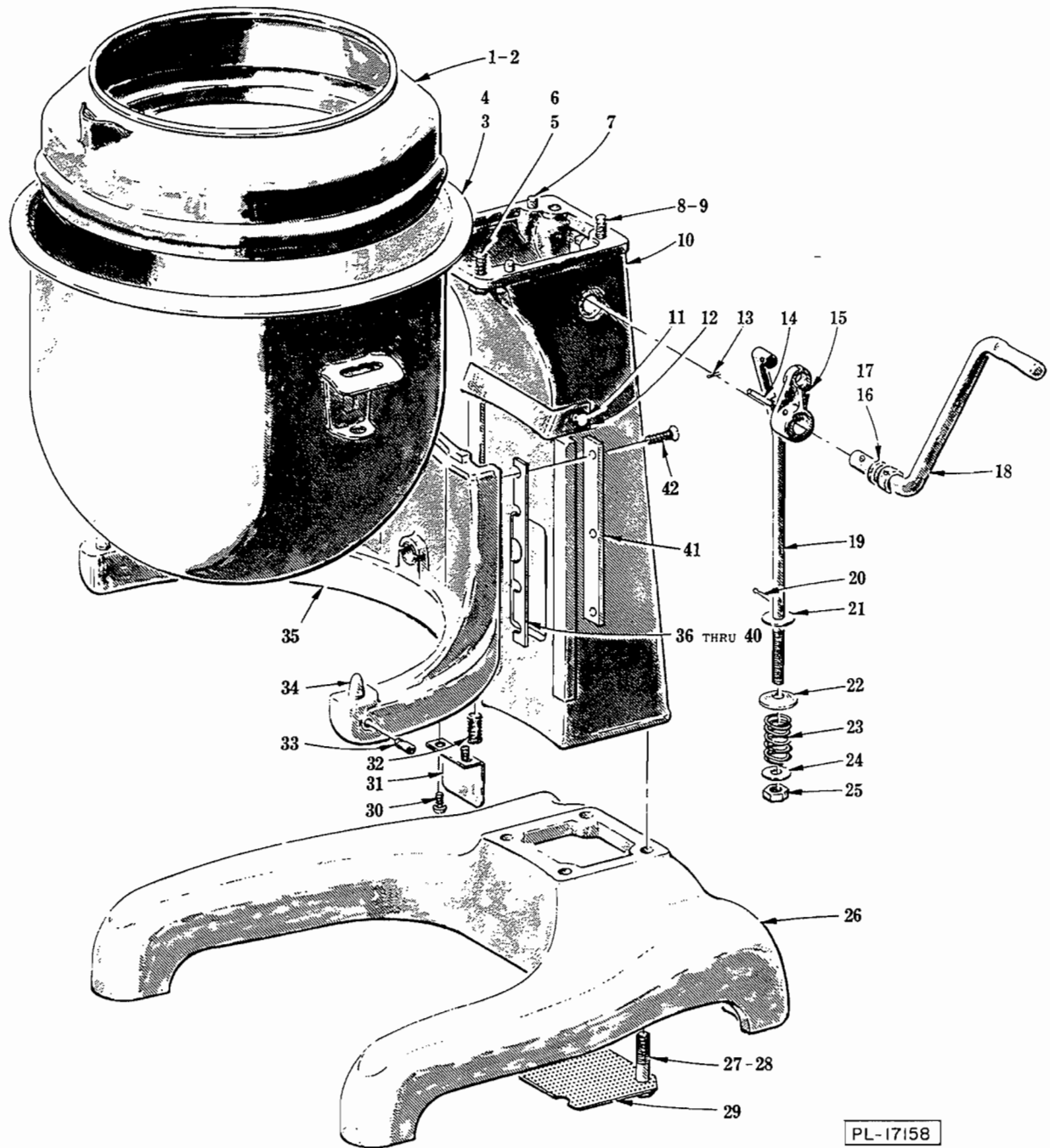
INSTALLATION DIAGRAM



PLANETARY AND ATTACHMENT HUB UNIT

## PLANETARY AND ATTACHMENT HUB UNIT

ILLUS. PL-17157	PART NO.	NAME OF PART	AMT.
1	SC-200-13	Mach. Screw - M.6 x 1 x 20 mm Flat Hd . . . . .	4
2	C-114832-2	Plug - Attachment Hub . . . . .	1
3	R-12686-1	Hub - Attachment . . . . .	1
4	C-108197-1	Thumb Screw Assy . . . . .	1
5	M-12746	Washer - Thrust (Give Thk.) . . . . .	AR
6	A-146031	Bevel Drive Gear & Plug Assy. (35T) . . . . .	1
7	P-15216-1	Internal Gear Assy. Unit (63T) (Incls. items #16 & 17) . . . . .	1
8	P-15214	Cup - Drip . . . . .	1
9	WL-3-35	Lock Washer - 1/4" High Collar . . . . .	6
10	SC-200-5	Cap Screw - M.6 x 1 x 30 mm Soc. Fil. Hd . . . . .	6
11	M-65062-1	Pin . . . . .	1
12	A-113936	Agitator Shaft Assy. Unit (Incls. item #11) . . . . .	1
13	M-23482	Seal - Oil (1" I.D.) . . . . .	1
14	BB-20-6	Ball Bearing - N.D. #7504 . . . . .	1
15	S-23166-1	Planetary . . . . .	1
16	BA-2-9	Ball - 1/4" Dia. . . . .	2
17	V-7094	Spring . . . . .	2
18	BB-17-12	Ball Bearing - N.D. #7503 . . . . .	1
19	M-15217	Pinion - Beater (19T) . . . . .	1
20	R-12430-55	Key . . . . .	1
21	RR-4-18	Retaining Ring . . . . .	1



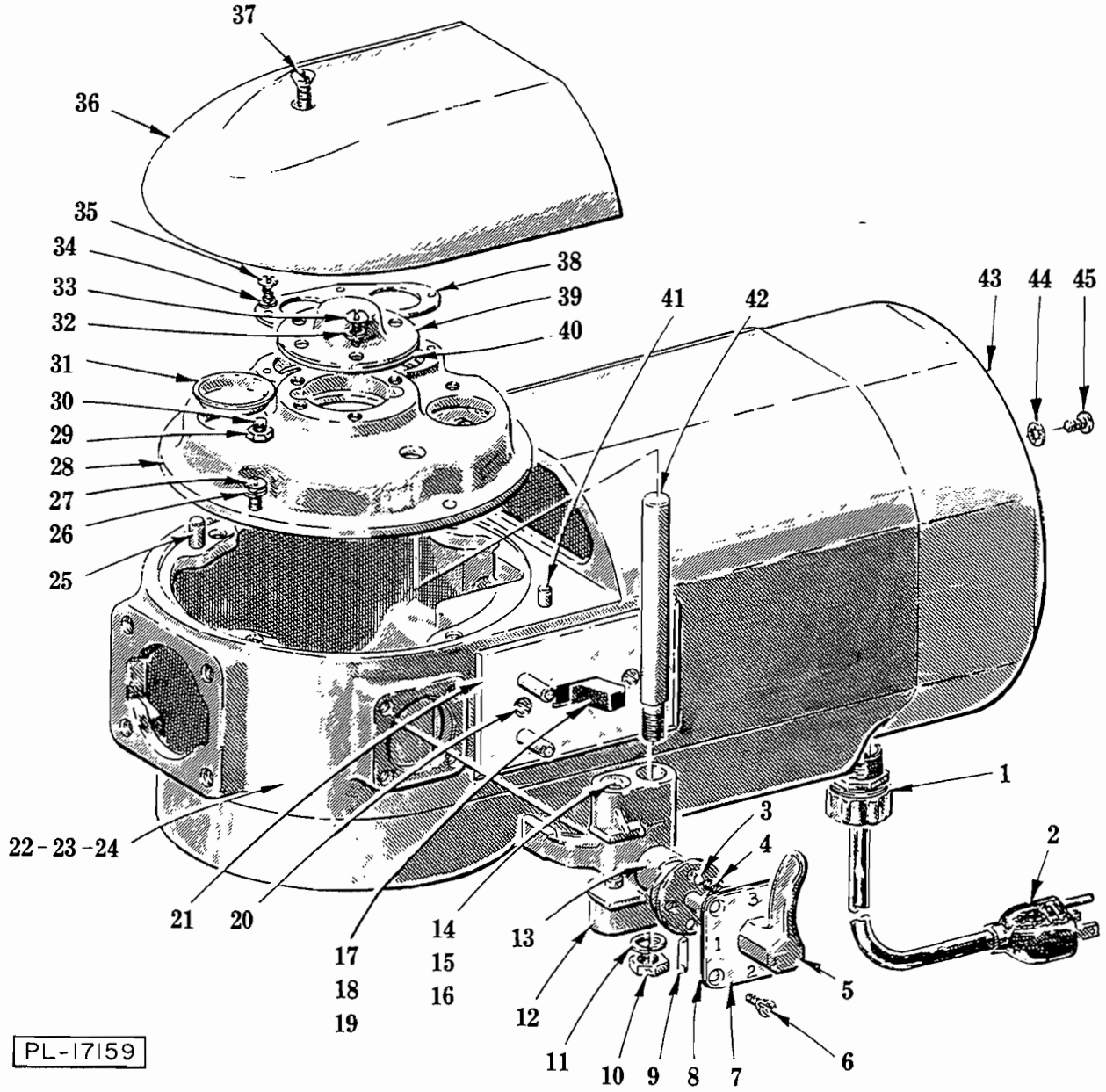
PL-17158

BASE, PEDESTAL AND BOWL UNIT



## BASE, PEDESTAL AND BOWL UNIT

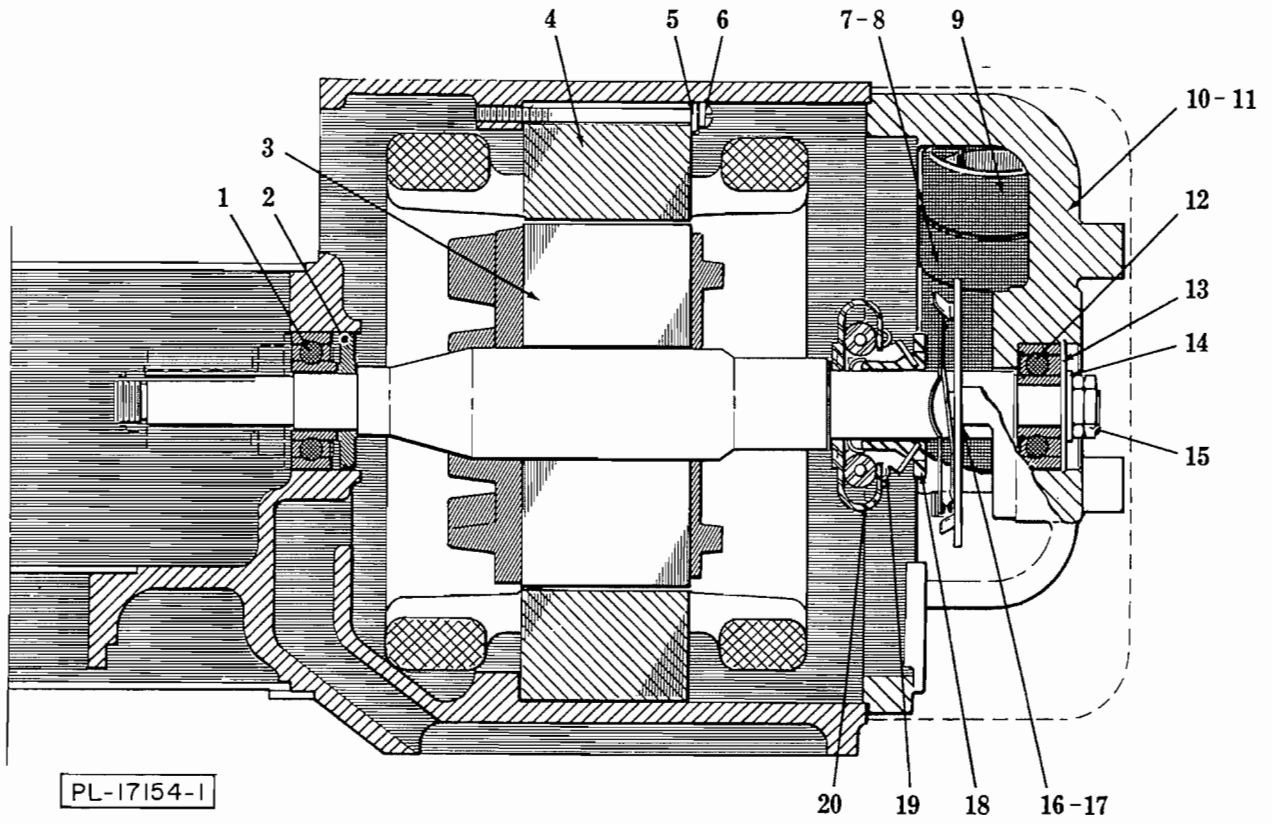
ILLUS. PL-17158	PART NO.	NAME OF PART	AMT.
1	S-20531-1	Splash Cover & Bowl Extension (20 Qt.)	1
2	R-86069-1	Cover - Splash (12 Qt.)	1
3	S-62103	Bowl Assy. (20 Qt.)	1
4	S-15360	Bowl Assy. (12 Qt.)	1
5	SC-200-7	Cap Screw - M.8 x 1.25 x 25 mm Hex Hd	2
6	WL-3-43	Lock Washer - 5/16" Light	2
7	D-11800-116	Dowel	2
8	SC-200-8	Cap Screw - M.8 x 1.26 x 25 mm Soc. Hd	2
9	WL-3-43	Lock Washer - 5/16" Light	2
10	T-78635	Pedestal	1
11	B-146041-1	Thumb Screw	2
12	P-78506	Shield - Upper Splash	1
13	PC-3-55	Cotter Pin - 1/8" x 3/4"	1
14	PS-4-15	Spiral Pin - 1/4" Dia. x 1-1/8" Lg	1
15	M-114430	Arm - Bowl Lift	1
16	WS-9-11	Washer (STL)	AR
17	WS-9-13	Washer (Fiber)	AR
18	P-114431	Lift Handle Assy	1
19	P-15215	Rod - Bowl Lift	1
20	PC-3-55	Cotter Pin - 1/8" x 3/4"	1
21	WS-6-33	Washer (STL)	AR
22	V-12745	Washer - Special	1
23	V-12782	Spring	1
24	WS-6-26	Washer (STL)	1
25	NS-13-26	Full Nut - 3/8"-24 Hex Fin	1
26	A-123840	Base Assy	1
27	SC-200-9	Cap Screw - M.10 x 1.5 x 35 mm Hex Hd	4
28	WL-200-2	Lock Washer - 10 mm Ext. Shakeproof	4
29	B-137130	Screen - Air	1
30	SC-200-2	Mach. Screw - M.4 x .7 x 10 mm Pan Hd	2
31	P-78505	Shield - Lower Splash	1
32	B-121625	Set Screw - Special	1
33	M-5014-1	Stud - Bowl Jacket Hook	2
34	V-6938-2	Pin - Bowl Locating	2
35	A-123839	Bowl Support Assy. Unit	1
36	A-113016-1	Shim - Bowl Support (.003" Thk.)	AR
37	A-113016-4	Shim - Bowl Support (.009" Thk.)	AR
38	A-113016-5	Shim - Bowl Support (.015" Thk.)	AR
39	A-113016-6	Shim - Bowl Support (.005" Thk.)	AR
40	A-113016-7	Shim - Bowl Support (.0075" Thk.)	AR
41	M-111213-1	Gib - Bowl Support	2
42	SC-200-11	Mach. Screw - M.5 x 1 x 16 mm Flat Hd	6



TRANSMISSION CASE AND SHIFTER UNIT

## TRANSMISSION CASE AND SHIFTER UNIT

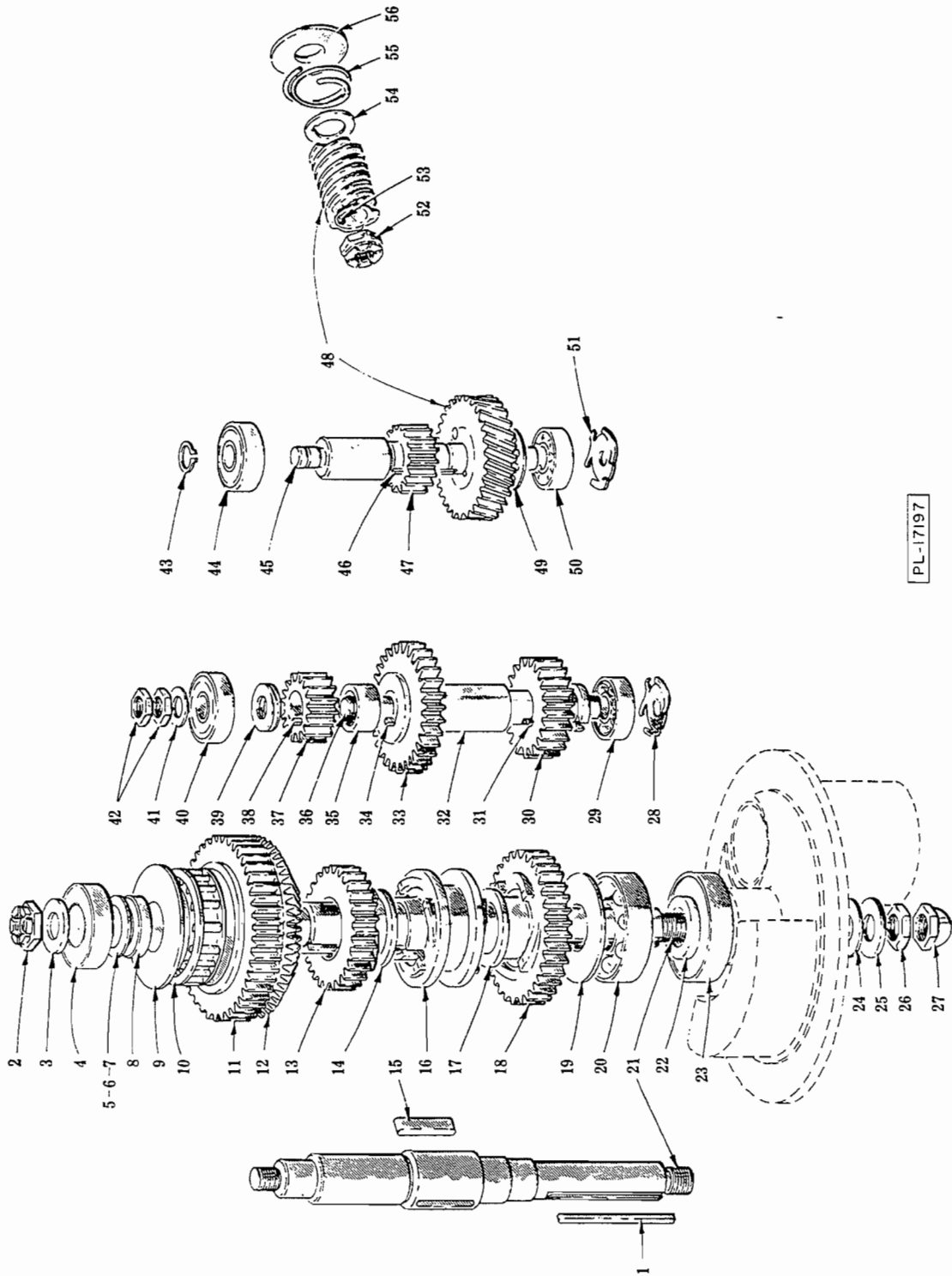
ILLUS. PL-17159	PART NO.	NAME OF PART	AMT.
1	FE-6-31	Connector - Strain Relief	1
2	B-117542-7	Cord & Plug Assy	1
3	BA-2-9	Ball - 1/4" Dia	2
4	V-111170	Spring - Detent	2
5	C-114505	Handle - Shifter	1
6	SC-200-10	Mach. Screw - M.5 x 1 x 12 mm Oval Hd	4
7	P-12726-1	Plate - Shifter Index	1
8	M-23946	Gasket - Shifter Index Plate	1
9	PS-3-8	Spricl Pin - 1/8" Dia. x 3/4" Lg	1
10	NS-13-22	Full Nut - 3/8"-16 Hex Fin	1
11	WL-4-2	Lock Washer - 3/8" Light	1
12	P-13160	Yoke - Shifter	1
13	B-114506	Cam - Gear Shifter	1
14	V-12733	Plunger - Shifter Yoke	2
15	V-12734	Spring - Shifter Yoke	2
16	V-12732	Retainer - Spring (Shifter Yoke)	2
17	P-87711-99-4	Switch (1 Ph.)	1
18	P-16504	Insulator - Switch	2
19	M-74835	Screw - Switch Mounting	2
20	SC-30-6	Mach. Screw - #6-32 x 3/8" Oval Hd	2
21	B-124564-2	Switch Plate Assy	1
22	E-118039	Case - Transmission	1
23	PL-3-14	Plug - 15/16" Dia. Expansion	1
24	PL-3-28	Plug - 1-5/16" Dia. Expansion	1
25	D-11800-116	Dowel	1
26	WL-200-1	Lock Washer - M.6	4
27	SC-200-4	Mach. Screw - M.6 x 1 x 16 mm Pan Hd	4
28	P-67750	Transmission Shaft Support and Screw Assy. (Incls. items #29 & 30)	1
29	NS-200-1	Mach. Nut - M.6 Hex	1
30	SC-200-6	Mach. Screw - M.6 x 1 x 40 mm Pan Hd	1
31	M-64871	Plug - Friction	2
32	WL-200-1	Lock Washer - M.6	3
33	SC-200-12	Mach. Screw - M.6 x 1 x 12 mm Pan Hd	3
34	WL-3-22	Lock Washer - #10 Light	4
35	SC-200-3	Mach. Screw - M.5 x .8 x 10 mm Pan Hd	4
36	S-18231-1	Cover - Transmission Case	1
37	SC-200-14	Mach. Screw - M.6 x 1 x 30 mm Flat Hd	1
38	M-12708	Retainer - Twin Bearing	1
39	M-20394-1	Cap - Bearing Retainer	1
40	M-20395	Retainer - Bearing	1
41	D-11800-61	Dowel	2
42	M-12735	Rod - Shifter Guide	1
43	C-136065	Cover - Motor End	1
44	WL-8-13	Lock Washer - #10 Int. Shakeproof	3
45	SC-200-23	Mach. Screw - M.5 x 1 x 10 mm Mushroom Hd	3



MOTOR UNIT

## MOTOR UNIT

ILLUS. PL-17154-1	PART NO.	NAME OF PART	AMT.
1	BB-16-9	Ball Bearing - N.D. #C8503 . . . . .	1
2	M-13174-1	Deflector - Grease . . . . .	1
3	C-145083-2	Rotor Assy. (60 Hz.) (Incls. items #18, 19 & 20) . . . . .	1
4	D-146000-1	Stator Assy. (60 Hz.) . . . . .	1
5	B-12671	Retainer - Stator . . . . .	4
6	B-136211-2	Bolt - Stator . . . . .	4
7	B-137241	Clip - Capacitor . . . . .	1
8	SC-200-20	Mach. Screw - M.5 x 1 x 16 mm Cheese Hd . . . . .	1
9	B-137181	Capacitor (60 Hz.) . . . . .	1
10	C-137182	Bracket - Bearing . . . . .	1
11	SC-200-22	Mach. Screw - M.6 x 1 x 20 mm Cheese Hd . . . . .	4
12	BB-17-5	Ball Bearing - N.D. #7601 . . . . .	1
13	RR-11-17	Retaining Ring . . . . .	1
14	WS-7-9	Washer - Special . . . . .	1
15	V-11430	Nut - Special . . . . .	2
16	P-66085	Switch Assy. (Stationary Part) . . . . .	1
17	SC-200-21	Mach. Screw - M3.5 x .6 x 8 mm Pan Hd . . . . .	2
18	P-21607	Sleeve - Switch (Rotating Part) . . . . .	1
19	P-23706-1	Spring - Switch (60 Hz.) (Rotating Part) . . . . .	2
20	P-88428	Starting Switch Assy. (Rotating Part) . . . . .	1

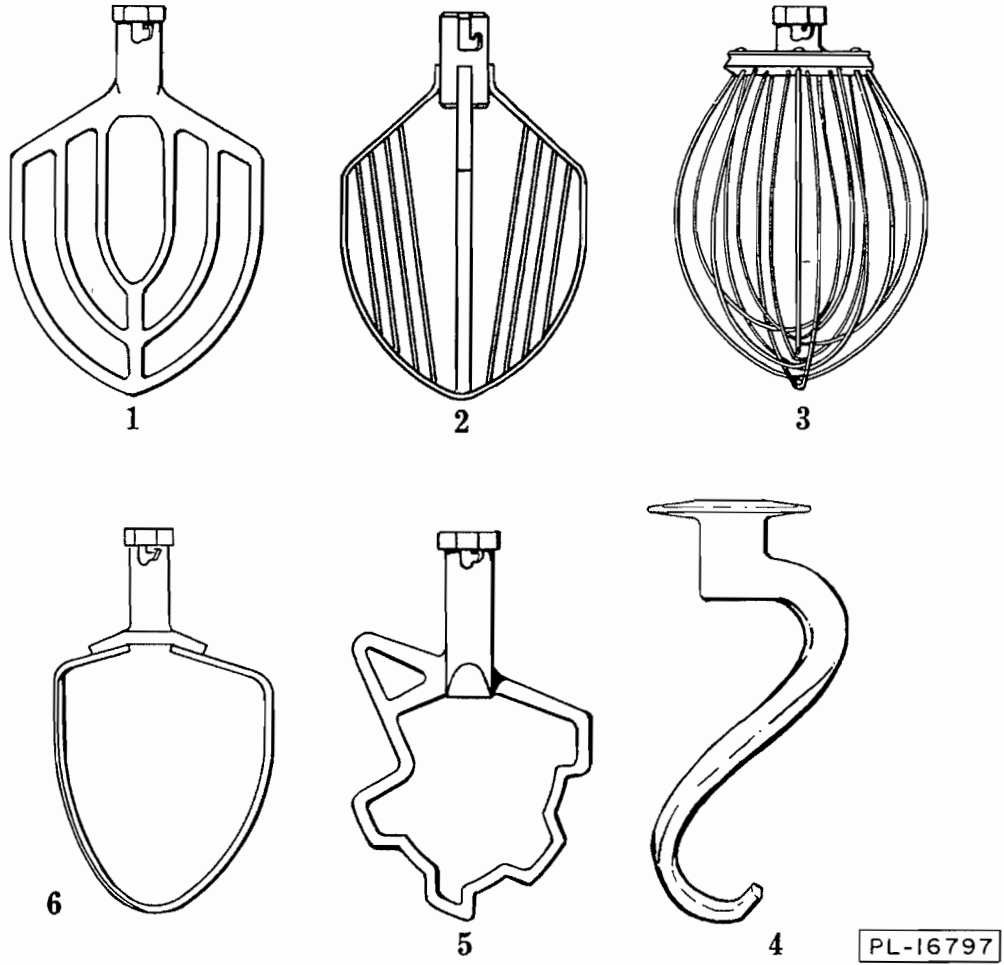


PL-17197

TRANSMISSION GEAR UNIT

## TRANSMISSION GEAR UNIT

ILLUS. PL-17197	PART NO.	NAME OF PART	AMT.
1	R-12430-18	Key . . . . .	2
2	NS-32-29	Stop Nut - 1/2"-20 "Flexloc" . . . . .	1
3	WS-8-13	Washer - Retaining . . . . .	1
4	BB-20-18	Ball Bearing - N.D. #77503 . . . . .	1
5	WS-10-18	Shim - Brg. (.002" Thk.) . . . . .	AR
6	WS-10-19	Shim - Brg. (.003" Thk.) . . . . .	AR
7	WS-10-20	Shim - Brg. (.010" Thk.) . . . . .	AR
8	B-36306	Spacer - Upper . . . . .	1
9	C-145151	Sleeve . . . . .	1
10	B-145149-1	Clutch . . . . .	1
11	C-145150	Gear - Slow Speed (46T) . . . . .	1
12	C-145148	Gear - Bevel (46T) . . . . .	1
13	C-12694	Gear - Clutch (29T) . . . . .	1
14	M-12695	Bearing - Clutch Gear . . . . .	1
15	D-12430-55	Key . . . . .	2
16	C-70035-2	Sleeve - Clutch . . . . .	1
17	M-12695	Bearing - Clutch Gear . . . . .	1
18	C-12696	Gear - Clutch (38T) . . . . .	1
19	M-12723	Spacer - Lower . . . . .	1
20	BB-20-6	Ball Bearing - N.D. #7504 . . . . .	1
21	C-135173	Shaft - Center . . . . .	1
22	M-14674	Spacer - Bearing . . . . .	1
23	A-114695	Seal - Oil . . . . .	1
24	WS-7-26	Washer (Fiber) . . . . .	1
25	WS-24-1	Washer - Retaining (STL) . . . . .	1
26	V-10928-2	Nut - 1/2"-20 Special . . . . .	1
27	M-24715-3	Acorn Nut - 1/2"-20 . . . . .	1
28	SL-2-8	Spring - Preloading . . . . .	1
29	BB-5-1	Ball Bearing - N.D. #3200 . . . . .	1
30	C-12699	Gear (23T) . . . . .	1
31	C-109070-18	Key - Hardened . . . . .	1
32	V-12697	Spacer - Lower . . . . .	1
33	C-12700	Gear (32T) . . . . .	1
34	C-109070-18	Key - Hardened . . . . .	1
35	V-12698	Spacer - Central . . . . .	1
36	M-12717	Shaft - Transmission . . . . .	1
37	C-103960	Gear (15T) . . . . .	1
38	C-109070-18	Key - Hardened . . . . .	1
39	V-12744	Spacer - Upper . . . . .	1
40	BB-5-2	Ball Bearing - N.D. #7500 . . . . .	1
41	WS-6-36	Washer - Retaining . . . . .	1
42	V-12710	Nut - Retaining . . . . .	2
43	RR-10-10	Retaining Ring . . . . .	1
44	BB-5-2	Ball Bearing - N.D. #7500 . . . . .	1
45	C-118239	Shaft - Worm Gear . . . . .	1
46	R-12430-4	Key . . . . .	1
47	C-103960	Gear (15T) . . . . .	1
48	A-123841	Worm & Worm Wheel (Incls. items #53 thru 56) . . . . .	1
49	RR-10-16	Retaining Ring . . . . .	1
50	BB-5-1	Ball Bearing - N.D. #3200 . . . . .	1
51	SL-2-8	Spring - Preloading . . . . .	1
52	NS-32-23	Stop Nut - 7/16"-20 "Flexloc" . . . . .	1
53	V-12747	Key . . . . .	1
54	V-12754	Washer . . . . .	1
55	V-12757	Spring - Shock Absorber . . . . .	1
56	V-12711	Washer - Shock Absorber Spring . . . . .	1



AGITATORS

ILLUS. PL-16797	PART NO.	PART NO.	NAME OF PART	AMT.
	20 QT.	12 QT.		
1	R-23126	R-23502	"B" Flat Beater . . . . .	1
2	D-123753	---	"C" Wing Whip . . . . .	1
3	R-23511-1	R-23523-1	"D" Wire Whip . . . . .	1
4	E-119984	S-62886	"ED" Dough Arm . . . . .	1
5	R-8022	---	"S" Sweet Dough Beater . . . . .	1
6	R-74286	---	"P" Pastry Knife . . . . .	1