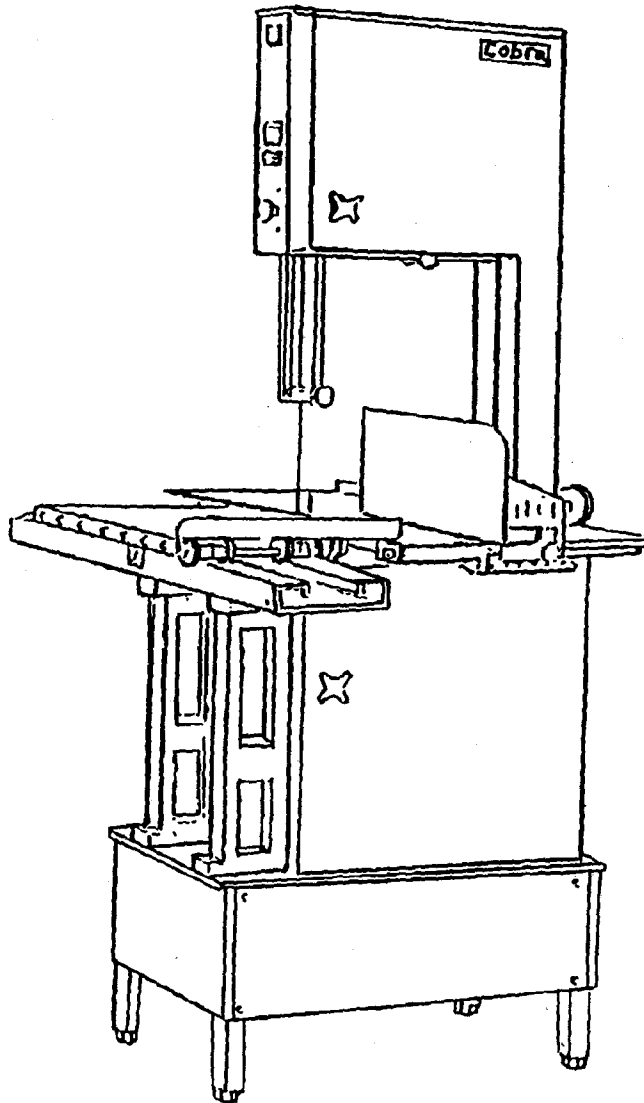


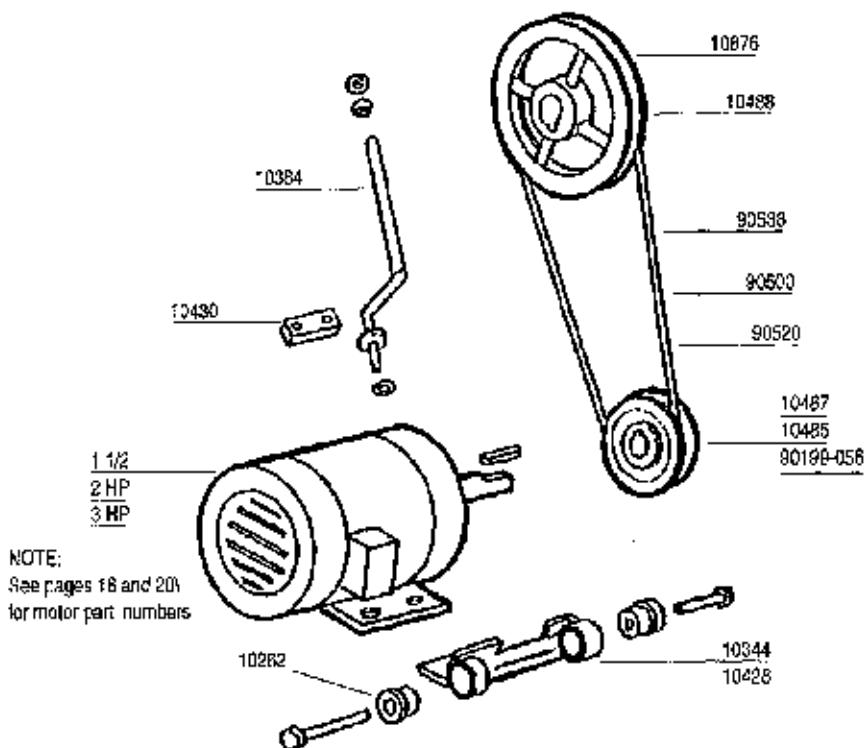
**COBRA 14 & 16**  
**Meat Saws**



THAT WERE MANUFACTURED BY "LASAR MFG" UNTIL 1988  
AMERICAN MEAT EQUIPMENT CORP HAD NO CONNECTION TO THE  
DESIGN, MANUFACTURING OR SALES OF THESE MACHINES.

---

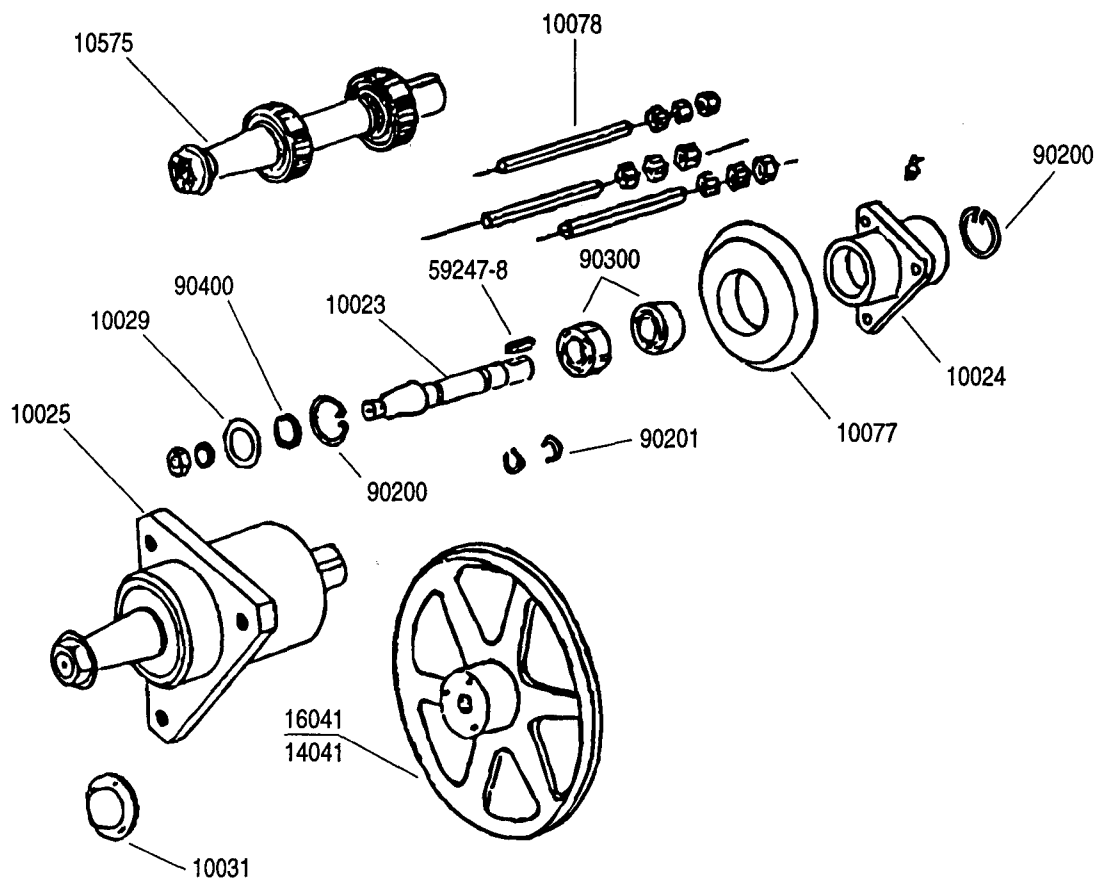
**Cobra 14 & 16 Drive Units**



NOTE:  
See pages 18 and 20  
for motor part numbers

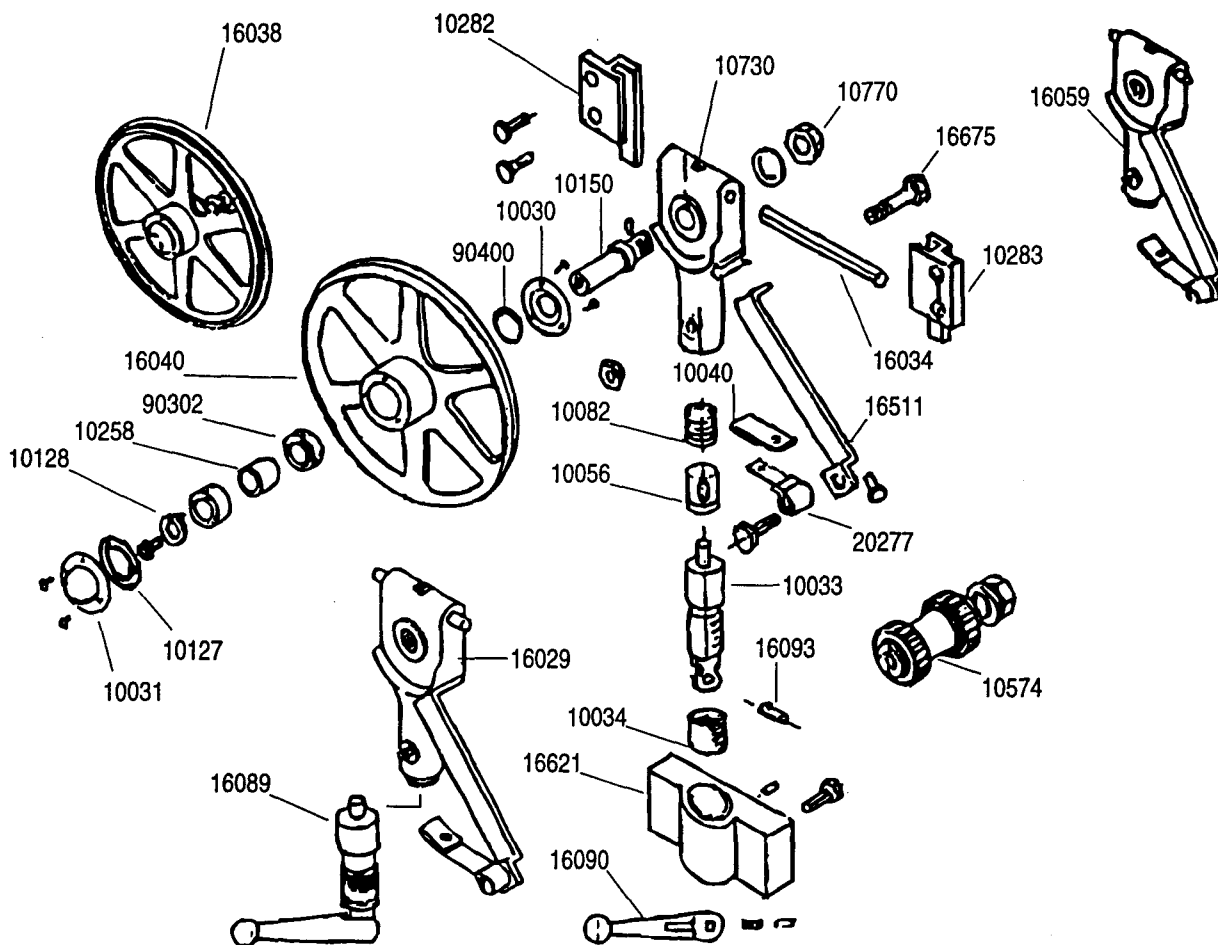
<b>Cobra 14 1 1/2 HP</b>	<b>Cobra 16 2 HP After S/N KC 160362</b>	<b>Parts Common to Cobras</b>
10428 . . . . .Motor Mount . . . . .1	10344 . . . . .Motor Mount 1P . . . . .1	10262 . . . . .Rubber Mount Assy. . . . .1
10487 . . . . .Drive Pulley . . . . .1	10428 . . . . .Motor Mount 3P . . . . .1	10384 . . . . .Torque Rod Assy. . . . .1
10876 . . . . .Driven Pulley . . . . .1	10485 . . . . .Drive Pulley . . . . .1	10430 . . . . .Torque Bracket . . . . .1
90538 . . . . .Belt . . . . .1	10488 . . . . .Driven Pulley . . . . .1	
1 1/2 Motor . . . . .1	90500 . . . . .Belt . . . . .1	
<b>Cobra 16 2 HP</b>	2 HP Motor . . . . .1	
<b>Before S/N KC 160362</b>	<b>Cobra 16 3 HP</b>	
10344 . . . . .Motor Mount 1PH . . . . .1	<b>After S/N KJ 160496</b>	
10428 . . . . .Motor Mount 3PH . . . . .1	10344 . . . . .Motor Mount . . . . .1	
10485 . . . . .Drive Pulley . . . . .1	10488 . . . . .Driven Pulley . . . . .1	
10876 . . . . .Driven Pulley . . . . .1	90199-058 Drive Pulley . . . . .1	
90538 . . . . .Belt . . . . .1	90520 . . . . .Belt . . . . .1	
2 HP Motor . . . . .1	3 HP Motor . . . . .1	

## Cobra 14 & 16 Lower Wheel Units



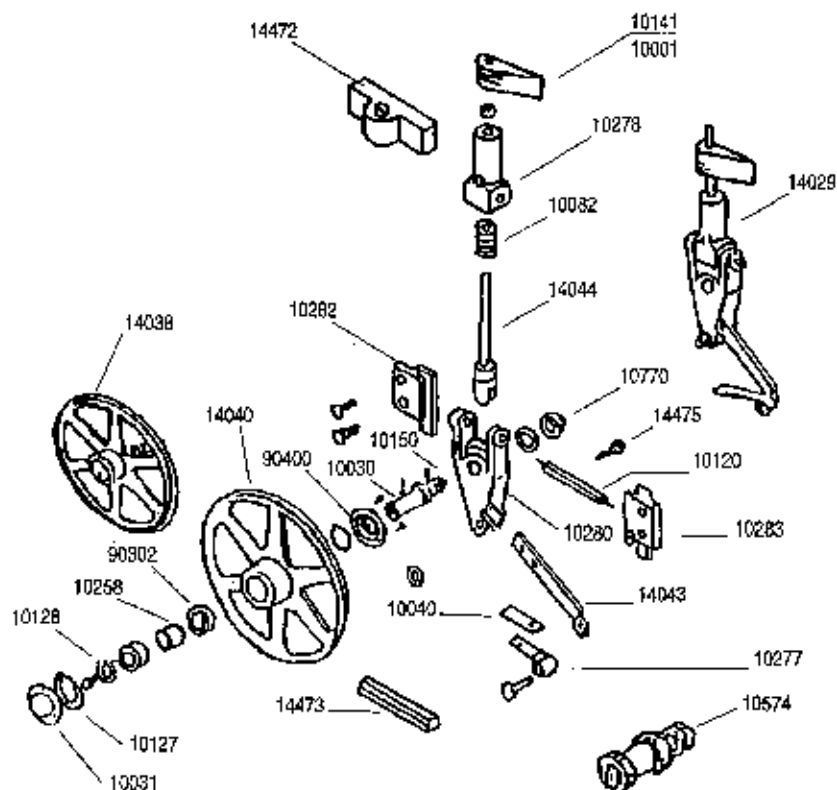
<b>COBRA 14</b>	<b>PARTS COMMON TO COBRAS</b>
14041 . . . . Lower Shaft Wheel . . . . .1	10023 . . . . Shaft . . . . .1
<b>COBRA 16</b>	10024 . . . . Bearing Housing . . . . .1
S/N KC 160362 & On . . . . .1	10025 . . . . Bearing Housing Assy . . . . .1
16041 . . . . Lower Shaft Wheel . . . . .1	10029 . . . . Seal Retainer . . . . .1
S/N KC 160361 . . . . .1	10031 . . . . Hub Cap . . . . .1
	10077 . . . . Housing Support . . . . .1
	10078 . . . . Support Stud . . . . .3
	10575 . . . . Lower Shaft Assy . . . . .1
	10770 . . . . Nut & Washer . . . . .1
	90200 . . . . Retaining Ring . . . . .2
	90201 . . . . Retaining Ring . . . . .2
	90300 . . . . Ball Bearing . . . . .2
	90400 . . . . Rubber Seal . . . . .1

**Cobra 16  
Upper Wheel and Blade Tension Unit**



10030	.....	Bearing Retainer	.....	1	10730	.....	Hanger	.....	1
10031	.....	Hub Cap	.....	1	10770	.....	Nut & Washer	.....	1
10033	.....	Adjusting Screw	.....	1	16029	.....	Blade Tension Assy	.....	1
10034	.....	Threaded Insert	.....	1	16034	.....	Tension Gauge Pin	.....	1
10040	.....	Scraper	.....	1	16038	.....	Upper Wheel & Shaft Assy	.....	1
10056	.....	Indicator	.....	1	16040	.....	Upper Wheel	.....	1
10082	.....	Tension Spring	.....	1	16059	.....	Upper Wheel Hanger & Arm Assy	.....	1
10121	.....	Retainer	.....	1	16089	.....	Tension Handle Assy	.....	1
10127	.....	Gasket	.....	2	16090	.....	Tension Handle	.....	1
10128	.....	Washer & Screw	.....	1	16093	.....	Pins & Spring	.....	1
10150	.....	Shaft	.....	1	16511	.....	Scraper Arm	.....	1
10258	.....	Spacer	.....	1	16621	.....	Gauge Block	.....	1
10277	.....	Scraper Spring	.....	1	16675	.....	Adjusting Screw & Nut	.....	1
10282	.....	Guide Block L.H.	.....	1	90302	.....	Bearing	.....	2
10283	.....	Guide Block R.H.	.....	1	90400	.....	Rubber Seal	.....	1
10574	.....	Upper Wheel Shaft Assy	.....	1					

**Cobra 14 Upper Wheel and Blade Tension Unit**

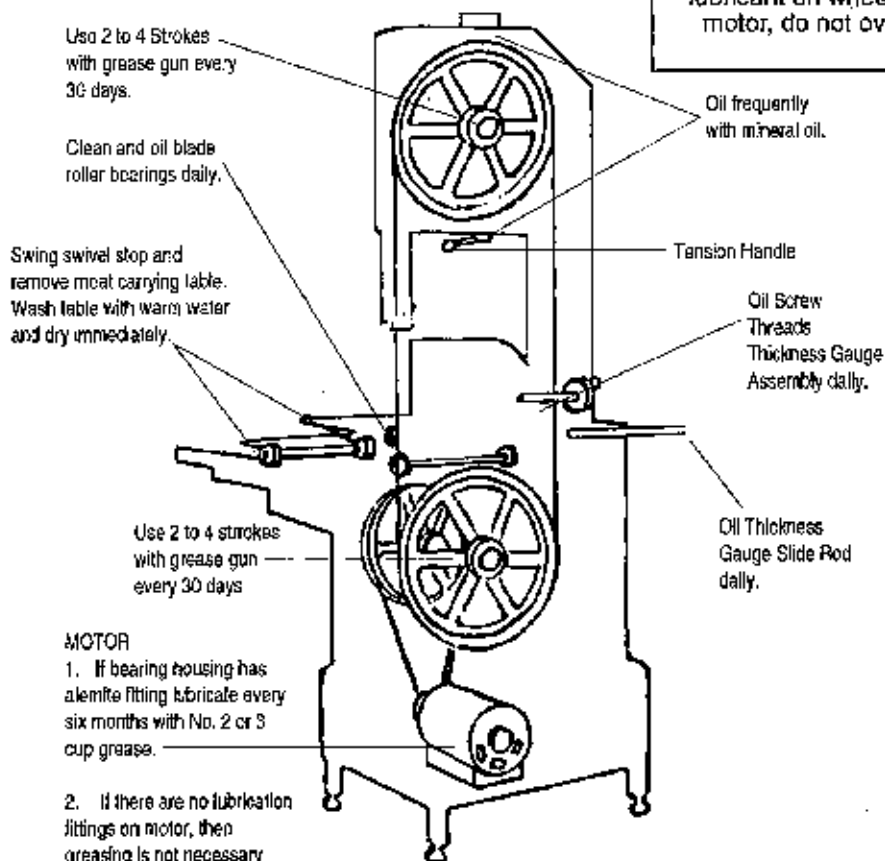


10001.....	Thrust Ring .....	1	10574 .....	Upper Wheel Shaft Assy .....	1
10030 .....	Bearing Retainer .....	1	10770 .....	Nut & Washer .....	1
10031 .....	Hub Cap .....	1	14029 .....	Blade Tension Assy .....	1
10040 .....	Scraper .....	1	14034 .....	Tension Gauge Pin .....	1
10082 .....	Tension Spring .....	1	14038 .....	Upper Wheel & Shaft Assy .....	1
1020 .....	Tension Gauge Pin .....	1	14040 .....	Upper Wheel .....	1
10121 .....	Retainer .....	1	14043 .....	Scraper Arm .....	1
10127 .....	Gasket .....	2	14044 .....	Rod & Indicator .....	1
10128 .....	Washer & Screw .....	1	14472 .....	Gauge Block .....	1
10141 .....	Tension Handle .....	1	14473 .....	Bottom Filler .....	1
10150 .....	Shaft .....	1	14475 .....	Adjusting Screw .....	1
10258 .....	Spacer .....	1	90302 .....	Bearing .....	2
10277 .....	Scraper Spring .....	1	90400 .....	Rubber Seal .....	1
10280 .....	Wheel Hanger .....	1			
10282 .....	Guide Block L.H. ....	1			
10283 .....	Guide Block R.H. ....	1			

## **Cleaning and Lubrication Instructions**

### **CAUTION!**

To prolong life of seals, and to prevent running out of lubricant on wheel hubs and motor, do not overgrease.



To clean and lubricate a WESTGLEN COBRA 14 or 16 Electric Meat, Fish, and Bone Saw, dismantle the saw and clean and lubricate as directed. First disconnect incoming power line (pull plug).

### **To Wash Bone Box:**

Wash with warm water and dry. NOTE: It is suggested that a paper liner be used in box after each washing for easy dumping and cleaning.

### **To Wash Interior of Saw:**

Wash with warm water and dry. Apply light mineral oil to all interior parts and surfaces. Application of mineral oil with spray gun, not only will expedite cleaning, but will eliminate any objectionable odors and will prolong the life of interior finish.

## Hints for Easy Operation

1. Stand either in front or at the right side of the machine, the only time the machine should be operated from the side is when splitting.
2. Always pay attention to the position of your hands in relation to the blade. Keep hands clear at all times.
3. Move the meat carrying table from right to left while holding the product in your right hand.
4. Keep the face of the meat flush with the thickness gauge and when cutting slices, hold the partially cut slice with your left hand after it passes the blade and pull it as you move the carriage.
5. Clear the remaining meat away before bringing the table back for another cut.
6. Always stop the Saw when you have finished with it, even though you are going to use it again in a few minutes.
7. After installing a new saw blade, cut up several pieces of scrap bone to clean the blade before proceeding to cut meat.

**NOTE:** Set blade guard for necessary cutting clearance, expose only that part of blade for use in actual cutting.

**MEAT THICKNESS GAUGE:** When cutting steaks and chops of the same thickness, save time by using the thickness gauge. Setting is made by turning gauge hand wheel. For splitting, breaking, or other intermediate operations, pull the gauge lock knob and slide the gauge to the extreme right. To again cut steaks and chops, pull gauge lock knob and slide gauge to the left. Gauge will automatically return to original setting.

**BLADE SUPPORT ADJUSTING BAR:** Used to support the blade as rigidly as though the saw were made especially for each cut, regardless of height from the table. Adjustment to the correct position can be made in a small fraction of a minute. Just release the bar lock, slide the bar to the desired position and again tighten the knob. The blade guard should never be removed. It covers that part of the blade not used for cutting and is your protection against accidents.

**SHORT CUT PLATE:** Must be used when cutting an already thin piece of meat. Set the meat against the thickness gauge, bring the pusher plate against the meat, then you are ready to proceed with cutting the meat without endangering your hands.

### Warning!

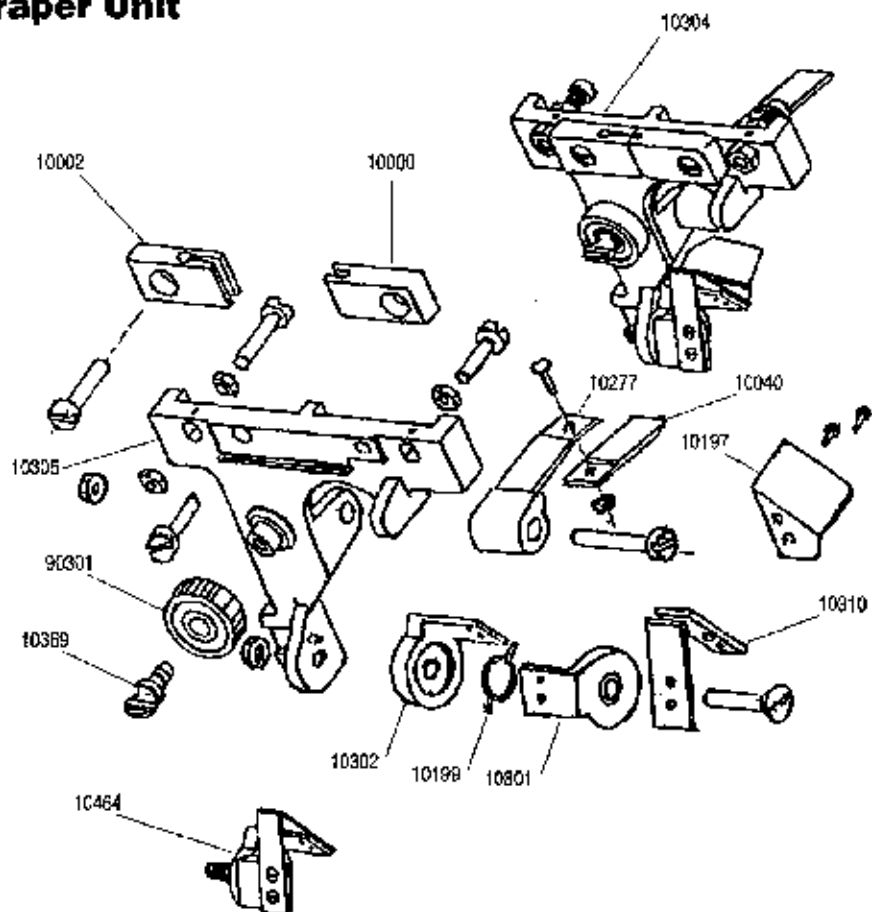
**ALWAYS** keep blade guard adjusted to cutting height.

**ALWAYS** keep hands away from saw blade. **STOP** the saw when finished cutting.

**USE** short cut plate when cutting from a thin piece of meat.

**ALWAYS** disconnect power line or pull plug when cleaning or servicing the saw.

**Front Scraper Unit**



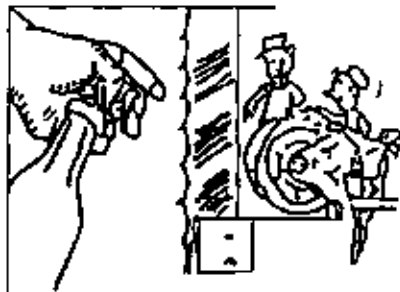
**PARTS COMMON TO COBRAS**

10000	.....Fiber Blade Block	.....1
10002	.....Lower Blade Guide	.....1
10040	.....Wheel Fiber Scraper	.....1
10197	.....Deflector	.....1
10199	.....Spring	.....1
10277	.....Scraper Spring	.....1
10301	.....Scraper Holder	.....1
10302	.....Scraper Holder	.....1
10304	.....Front Scraper Assy	.....1
10305	.....Scraper & Roller Mount	.....1
10310	.....Scraper S.S.	.....2
10369	.....Thumb Screw	.....1
10464	.....Blade Scraper Assy	.....1
90301	.....Ball Bearing	.....1



**MAINTENANCE CHECKLIST**

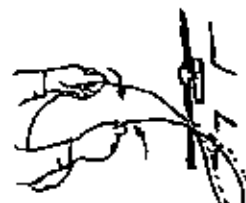
- ✓ **Tracking of Blade.** Do teeth clear guides and scrapers? Turn pulleys by hand and check. (Rotate clockwise to check tracking).
- ✓ **Blade Back-up.** If roller type, does it turn freely? Is it adjusted to proper distance from back of blade? If carbide bar type, replace if slotted.
- ✓ **Upper Guide Post.** Does it give proper support to blade or is it worn badly?
- ✓ **Meat Table.** Are bearings worn enough to affect straight cutting?
- ✓ **Meat Gauge Plate.** Does it give cut proper support?
- ✓ **Metal Tag Staples.** Have they been removed from meat?
- ✓ **Pulleys.** Are they clean? Are they correctly lined up? Are bearings worn?
- ✓ **Tension of Blade.** Check indicator. Lubrication and Sanitation.
- ✓ **To get the best performance from your band saw blades, and to help control your maintenance cost, both lubrication and sanitation are very important. Spray with white mineral oil after each cleaning.**



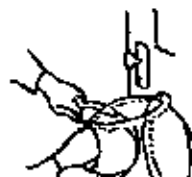
**A SIMPLE METHOD OF COILING A SAW BLADE**



Grasp blade as illustrated above, bracing it against a door or wall. Press thumbs against blade and turn wrists.



As hands are brought toward each other, blade will start to coil as shown.



Bring both thumbs so that thumb-nails face each other. At that point coils are formed and can be nested by pushing both hands forward.

**WESTGLEN SAW MODEL COBRA 14 & 16  
MOTOR REPLACEMENT AND VEE BELT ADJUSTMENT**

1. **WARNING!** To remove motor from the saw make sure that the powerline to the saw has been disconnected.
2. Disconnect flex line and wiring from motor at the Junction Box.
3. Loosen and remove nuts from motor torque rod and remove Vee belt from pulleys. This will allow motor to rest on the floor.
4. Remove the two bolts that secure motor to motor base.
5. Slide motor out at bottom of machine and remove motor drive pulley.
6. Reverse procedure sequence 5, 4, and 3 for installation of new motor.
7. To adjust Vee Belt tighten torque rod nuts until vee belt tension can be deflected with thumb pressure 3/8" to 1/2" inward.
8. Reconnect flex line to motor Junction box using diagram on motor's nameplate.
9. Reconnect power line to saw.

**TROUBLE SHOOTING GUIDE**  
**Saw Model Cobra 14 & 16**

**1. RUNNING HOT:**

During the cutting operation, if saw slows down or stops suddenly, then upper and lower guides may be packed with veins and bone dust. To clean guides, first remove band saw blade, then use old hand saw blade to saw through obstacles clogging slots in guides.

**2. BLADE JUMPING:**

Caused by either blade tension, dirty wheels (wheel) alignment. Wheel and blade cleaners, cleaning of blade and wheel is accomplished with one piece cleaning assembly. The blade travels between two automatic adjusting scrapers located directly below the table, cleaning the blade after it passes through the meat and before it reaches the lower wheel. Each wheel has a fiber cleaner held in place by spring tension and so arranged that it provides a scraping action on the wheel rims.

Fat and bone dust can form a coating on the face of the wheels that will cause the blade to jump off. This may also cause the wheels to increase in size and build up a tension on the blade that may cause it to break.

To remedy these conditions, make sure the wheel scrapers are properly adjusted and in good condition. Replace all worn scrapers. Clean the grooves in the wheels with a wire brush. Replace wheels when they wear smooth.

Please see page 22 for adjusting wheel alignment and for blade tension.

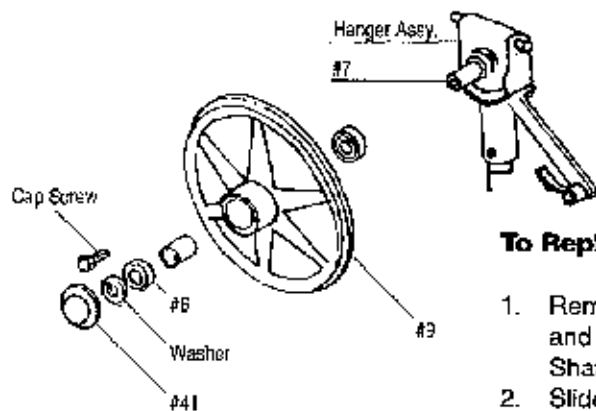
**IF SAW WILL NOT RUN:**

- A. Check if saw blade is free in saw guide
- B. Check line fuses and power supply.
- C. Check for broken wires.
- D. Check Vee belts for proper tension. (See motor replacement sequence sheet).
- E. Finally, check motor.

**UNPACKING AND INSTALLATION  
INSTRUCTIONS**

1. Remove **cardboard** container surrounding the saw.
2. Loosen the two (2) bolts holding the saw to the wooden base.
3. Remove saw from the wooden base.
4. Place saw into position and level the machine using adjustable legs.
5. Check blade. Be sure it is in the guides and runs free. Check to be sure the teeth are pointed down.
6. Have machine wired by a certified electrician. See wiring diagram.

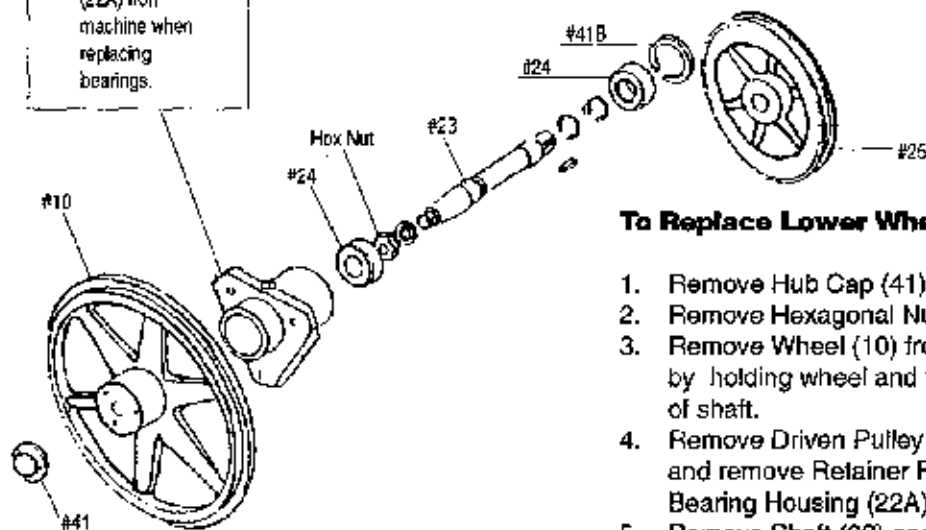
## Upper and Lower Wheel Bearings Parts and Replacement



### To Replace Upper Wheel Bearings

1. Remove Hub Cap (41) and then remove cap screw and washer. \*Note: It is not necessary to remove Shaft (7) from Hanger Assembly.
2. Slide Wheel (9) from Shaft (7) and remove Ball Bearings (6).
3. Thoroughly clean hub interior before installing new bearings.
4. Replace Bearings (6) by pressing in Wheel (9). Use arbor press. Keep parts absolutely clean.

#22  
Do not move lower wheel bearing housing (22A) from machine when replacing bearings.



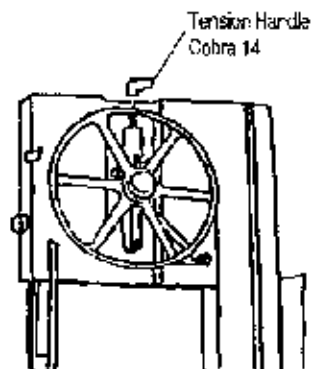
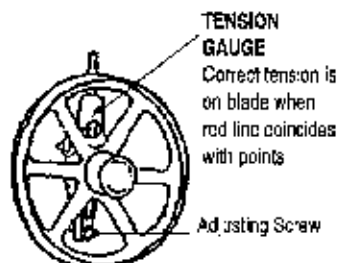
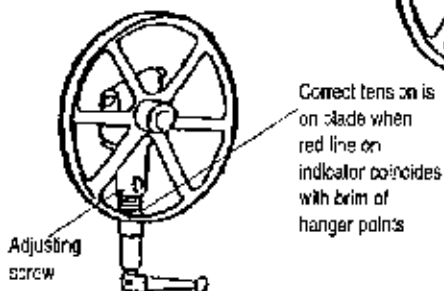
### To Replace Lower Wheel Bearings

1. Remove Hub Cap (41).
2. Remove Hexagonal Nut from Shaft (23).
3. Remove Wheel (10) from Shaft (23) by holding wheel and tapping on end of shaft.
4. Remove Driven Pulley (25) from shaft and remove Retainer Ring (41B) from Bearing Housing (22A).
5. Remove Shaft (23) and Bearings (24) from Bearing Housing (22A) by pushing on tapered end of shaft.
6. Thoroughly clean interior of Bearing Housing (22A).
7. Replace Bearings (24) by pressing them on Shaft (23). Use arbor press. Keeps parts absolutely clean.

## Cobra 14 & 16 Adjusting Saw Blade Alignment and Tension

### Warning!

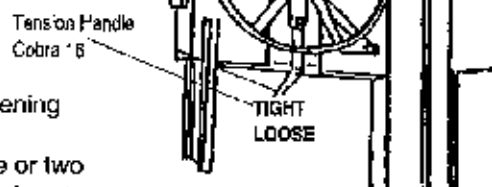
NEVER TIGHTEN TENSION BEYOND RED INDICATOR LINE. Otherwise blade breakage, shortened bearing life, shaft breakage could occur.



### IF SAW BLADE IS JUMPING, THEN FOLLOWING ADJUSTMENTS SHOULD BE MADE:

#### Adjust Upper Wheel by-

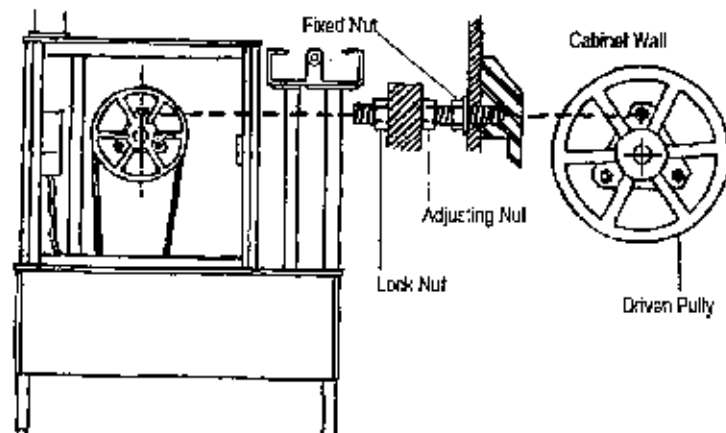
1. Completely releasing tension on saw blade by loosening tension handle.
2. Loosening lock-nut and turning adjusting screw one or two turns in a clockwise direction and then tightening lock-nut. This adjustment will bring blade against shoulder of wheel.



### IF BLADE IS STILL JUMPING

#### Adjust Lower Wheel by-

1. Completely releasing tension on saw blade by loosening tension handle.
2. Loosen lock-nut in front of flange, then turn nut in back of flange clockwise 1/2 turn. Tighten front nut. Repeat this procedure as many times as necessary. When finished, tighten lock-nut in front, securely.



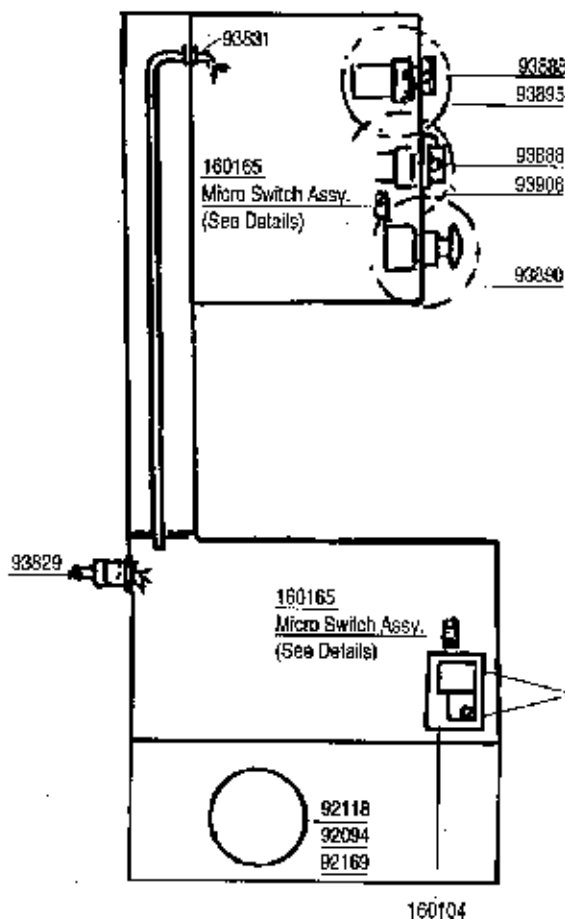
**IMPORTANT:**  
**NEVER LOOSEN FIXED NUTS FOR ADJUSTMENT**

# BUTCHER BOY Models COBRA 14 & 16 Meat Saws

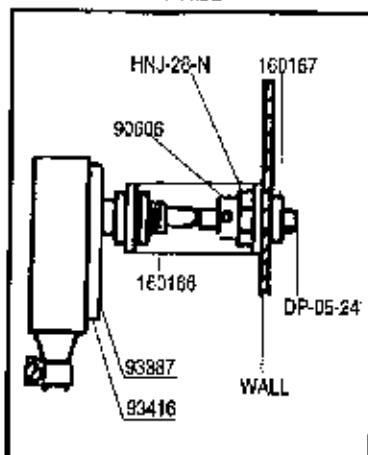
## Electrical 460v Three Phase

Standard 1 1/2 HP For Cobra 14

Standard 2 & 3 HP For Cobra 16



DETAILS OF 160165 MICRO SWITCH ASSEMBLY



90606	.....Collar	.....1
92094	.....1 1/2HP 460V 3PH Motor	.....1
92118	.....2HP 460V, 3PH Motor	.....1
92169	.....3HP 460V, 3PH Motor	.....1
93387	.....Micro Switch	.....1
93416	.....Cover	.....1
93452	.....Motor Starter & Overload	.....1
	(Cobra 14) 1 1/2 HP	
93463	.....Motor Starter & Overload	.....1
	(Cobra 16) 2 HP	
93468	.....Motor Starter & Overload	.....1
	(Cobra 16) 3 HP	
93829	.....Connector	.....1
93831	.....Bushing	.....1
93888	.....Lamp	.....2
93890	.....Stop Button Assy	.....1
93895	.....Light Assy.	.....1
93900	.....Start Button Assy	.....1
1160165	.....Micro Switch Assy.	.....2
160104	.....Switch Enclosure	.....1
160166	.....Bracket	.....1
160167	.....Guide	.....1
DP-05-24	.....Pin	.....1
HNJ-28-N	.....Hex Jam Nut	.....1

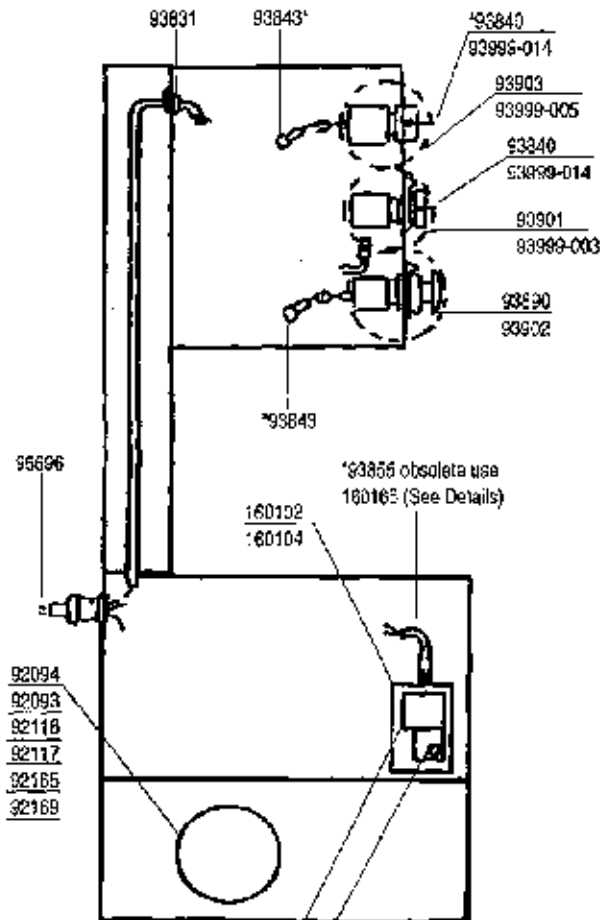
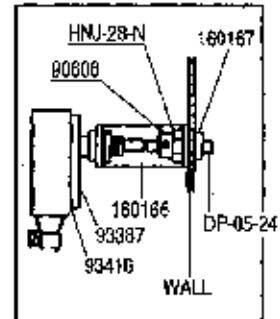
## Electrical 208/230v Single or Three Phase

Standard 1 1/2 HP For Cobra 14

Standard 2 HP For Cobra 16 before S/N KJ160496

Standard 3 HP For Cobra 16 S/N KJ160496-On

DETAILS OF 160165  
MICRO SWITCH ASSEMBLY



- 92094
- 92093
- 92118
- 92117
- 92165
- 92169

- 93458 (1 1/2HP-3PH)
- 93458 (2HP-3HP)
- 93459 (2HP-1HP)
- 93462 (1 1/2HP-1PH)
- 93467 (3HP-3PH)
- 93651 (3HP-1PH)

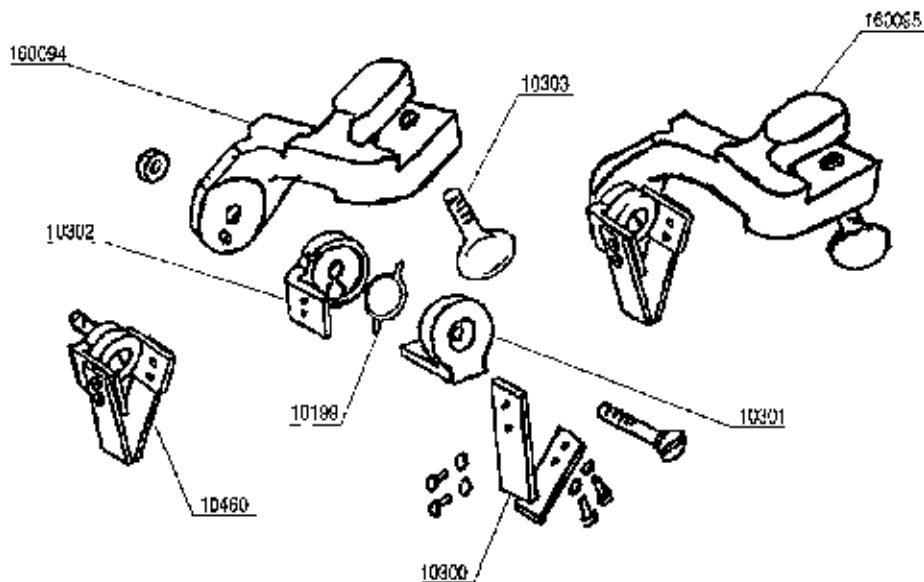
90606	.....Collar	.....2
92093	.....1 1/2 208/230V 1PH Motor	.....1
92094	.....1 1/2 208/230V 3PH Motor	.....1
92117	.....2HP 208/230V 1PH Motor	.....1
92118	.....2HP 208/230-460 3PH Motor	.....1
92165	.....3HP 208/230v 1 PH Motor	.....1
92169	.....3HP 208/230-460 3 PH Motor	.....1
93387	.....Micro Switch	.....2
93416	.....Cover	.....2
93458	.....3PH Motor Starter & Overload (1 1/2 HP)	.....1
93458	.....3PH Motor Starter & Overload (2 HP)	.....1
93469	.....1PH Motor Starter & Overload (2 HP)	.....1
93462	.....1PH Motor Starter & Overload (1 1/2 HP)	.....1
93467	.....3 PH Motor Starter & Overload 3 HP	.....1
93651	.....1 PH Motor Starter & Overload 3 HP	.....1
93331	.....Bushing	.....1
93340	.....Lamp (16mm)	.....2
93843	.....Step Down Resistor	.....2
93855	.....Micro Switch	.....2
93900	.....Stop Button Assy (22 mm)	.....1
93901	.....Start Button (16mm)	.....1
93902	.....Stop Button (16mm)	.....1
93903	.....Light Assy (16mm)	.....1
93999-008	.....Start Button Assy (22 mm)	.....1
93999-005	.....Light Assy (22 mm)	.....1
93999-014	.....Lamp (22mm)	.....1
95696	.....Connector	.....1
160102	.....Switch Catch Brkt.	.....1
160104	.....Switch Enclosure	.....1
160165	.....Micro Switch Assy	.....2
160166	.....Bracket	.....2
160167	.....Guide	.....2
HNJ-28-N	.....Nut	.....2

\* For 16mm buttons (square type) before S/N LJ160659





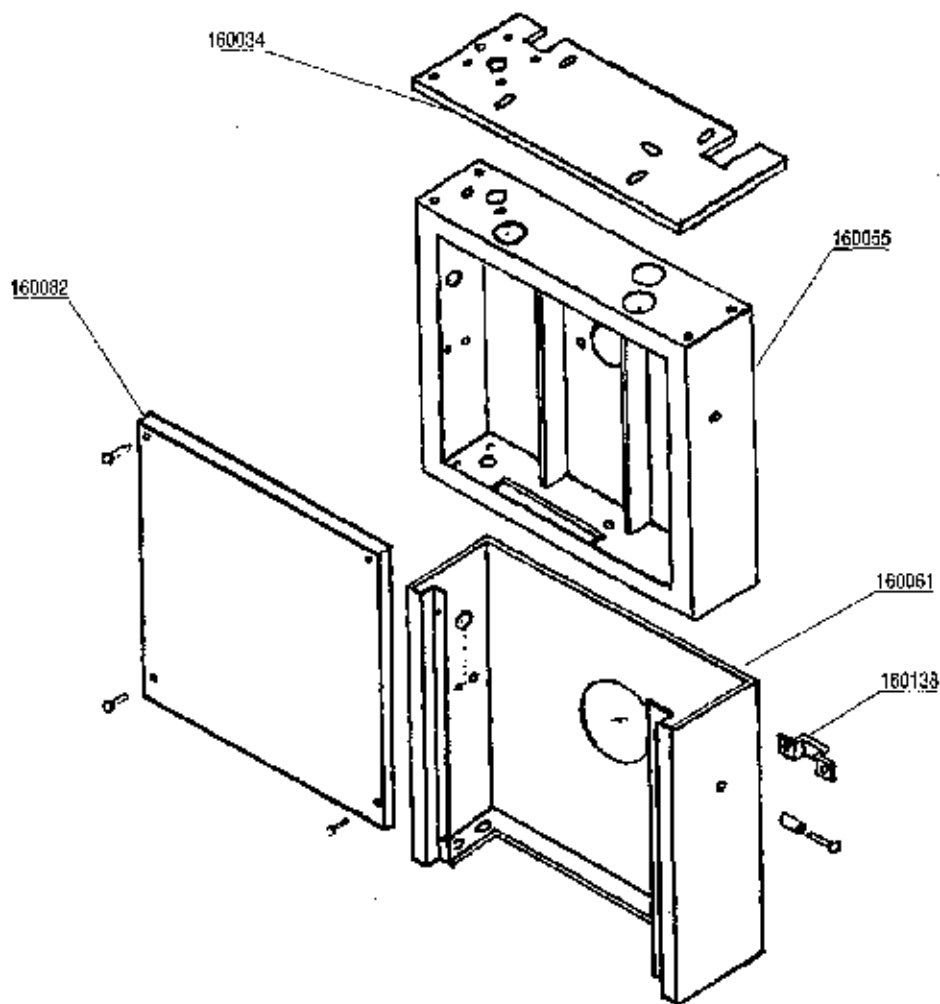
**14 & 16 Rear Blade Scraper Units**



**PARTS COMMON TO COBRA 14, 16**

10300	...Fiber Scraper	.....2
10301	...Scraper Holder	.....1
10302	...Scraper Holder	.....1
10303	...Thumb Screw	.....1
10199	...Spring	.....1
10460	...Blade Scraper Assy	.....1
160094	...Scraper Mount	.....1
160095	...Rear Scraper Assy	.....1

**Cobra 14 & 16 Cabinet Units**



<b>COBRA 14</b>	<b>PARTS COMMON TO COBRAS</b>	<b>COBRA 16</b>
140034 ....Cabinet Top .....1	160138 ...Latch Catch .....1	160034 ....Cabinet Top .....1
140055 ....Cabinet .....1		160055 ....Cabinet .....1
140061 ....Base Wrap .....1		160061 ....Base Wrap .....1
140082 ....Cover .....1		160082 ....Cover .....1

**TABLE OF CONTENTS**

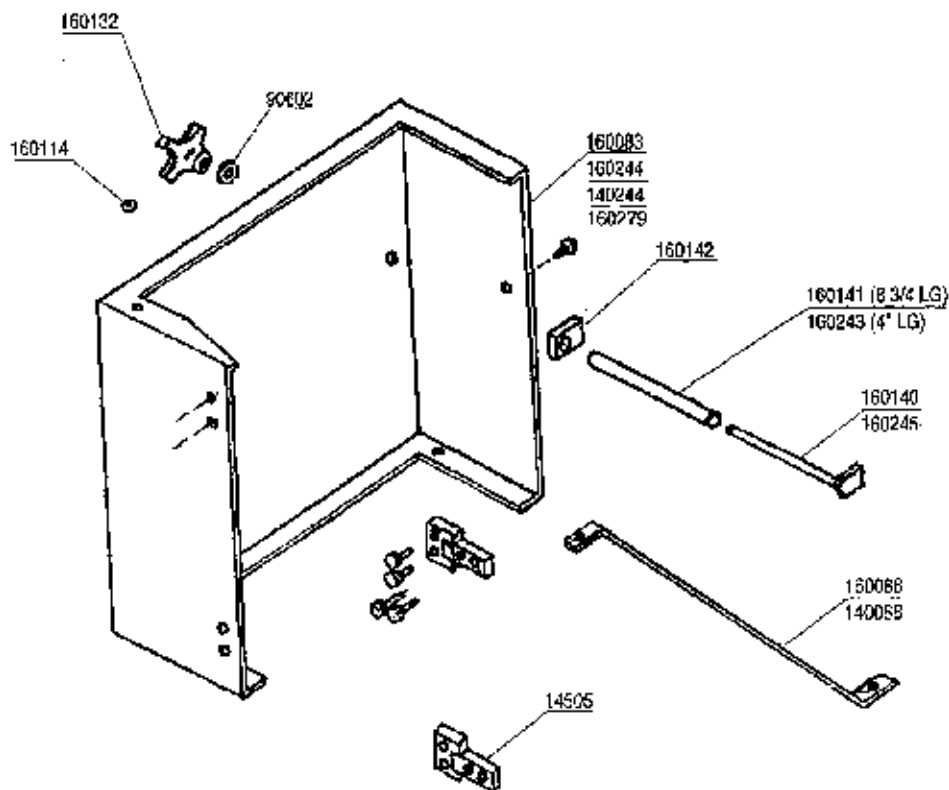
<b>SECTION TITLE</b>	<b>PAGE</b>
<b>Unpacking and Installation Instructions</b>	<b>3</b>
<b>Hints for Easy Operation</b>	<b>4</b>
<b>Cleaning and Lubrication Instructions</b>	<b>5</b>
<b>Parts Lists</b>	
Upper Wheel Cobra 14 and Blade Tension Unit	6
Upper Wheel Cobra 16 and Blade Tension Unit	7
Cobra 14 & 16 Lower Wheel Units	8
Cobra 14 & 16 Drive Units	9
Front Scraper Unit	10
Thickness Gauge Unit	11
Cobra 14 & 16 Saw Guard Units	12
Cobra 14 & 16 Head and Door Units	13
Cobra 16 Carrying Table for Aluminum Table Supports	14
Cobra 14 & 16 Carrying Table for Stainless Steel Table Supports	15
Cobra 14 & 16 Stationary Table Units	16
Cobra 14 & 16 Base Units	17
Aluminum and Stainless Steel Carrying Table Supports	18
Cobra 14 & 16 Lower Door Units	19
Cobra 14 & 16 Cabinet Units	20
Rear Blade Scraper Units	21
Hi-Speed (3HP) Cobra 16 Fish Saw	22
<b>Electrical</b>	
Electrical 208/230v Single or Three Phase	23
208/230v Single or Three Phase Wiring Diagram & Schematic	24
208/230v Single or Three Phase Wiring Diagram & Schematic	25
Electrical 460v Three Phase	26
460v Three Phase Wiring Diagram & Schematic	27
<b>Adjusting Saw Blade Alignment and Tension</b>	<b>28</b>
<b>Upper and Lower Wheel Bearings Parts and Replacements</b>	<b>29</b>
<b>Trouble Shooting Guide</b>	<b>30</b>
<b>Motor Replacement &amp; Vee Belt Adjustment</b>	<b>31</b>
<b>Maintenance Check List</b>	<b>32</b>
<b>Warranty</b>	<b>33</b>

## Cobra 14 & 16 Lower Door Units

**Aluminum door Standard to, S/N KE 160406 Cobra 16 Only**

**Stainless Steel Door Standard from, S/N KE 160407-On Cobra 16**

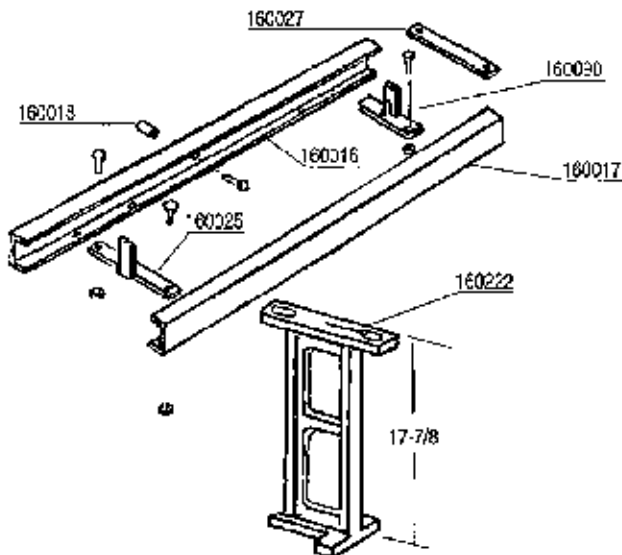
**Stainless Steel Door Standard from, S/N KG 140101-On Cobra 14**



COBRA 14	PARTS COMMON TO COBRAS	COBRA 16 (Alum Door)
140088 ...Door Brace .....1	14505 ...Hinge .....2	160083 ...Lower Door (Alum.) ...1
140244 ...Lower Door (S.S.).....1	160114 ...Shim Washer .....1	160088 ...Door Brace .....1
	160132 ...Door Knob .....1	160140 Door Bolt .....1
	160140 ...Door Bolt .....1	16014 Bolt Tubing .....1
	160141 ...Bolt Tubing .....1	160244 Lower Door S.S. ....1
	160142 ...Support Block .....1	<b>COBRA 16 (S.S. Door)</b>
	90602 ...Rubber Washer .....1	160243 Bolt Tubing
		160279 Lower Door S.S. ....1
		160245 Door Bolt .....1

**Aluminum Carrying Table Support For Cobra 16 Only**  
**Before S/N KD 160387**

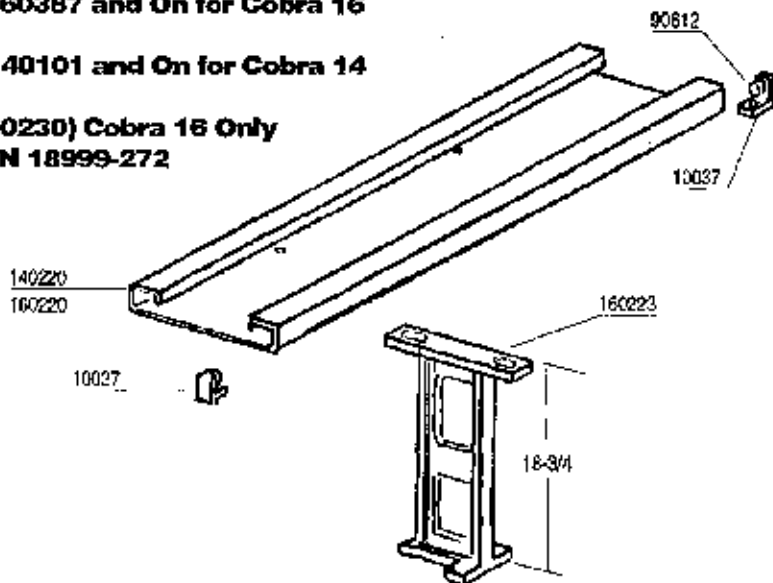
- 160016 . . . Table Support Inner . . . . . 1
- 160017 . . . Table Support Outer . . . . . 1
- 160018 . . . Table Support Spacer . . . . . 1
- 160025 . . . Table Stop Stationary . . . . . 1
- 160027 . . . Channel Brace . . . . . 1
- 160090 . . . Table Stop Hinged . . . . . 1
- 160222 . . . Support Column . . . . . 2



**Stainless Steel Carrying Table Support For Cobra 14 & 16**

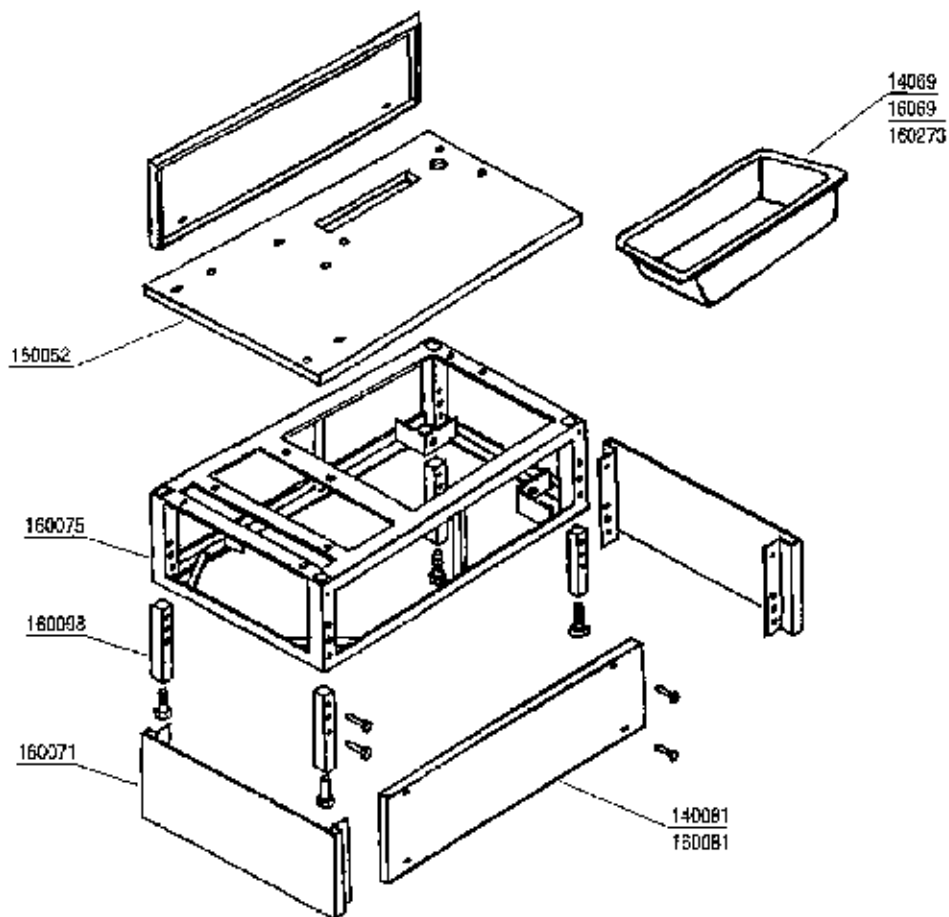
**Standard from S/N KD 160387 and On for Cobra 16**  
**(used w/Table 160230)**  
**Standard from S/N KG 140101 and On for Cobra 14**

**Retrofit Kit (w/ Table 160230) Cobra 16 Only**  
**from Alum Support Is P/N 18999-272**  
**(sent w/ drawing)**



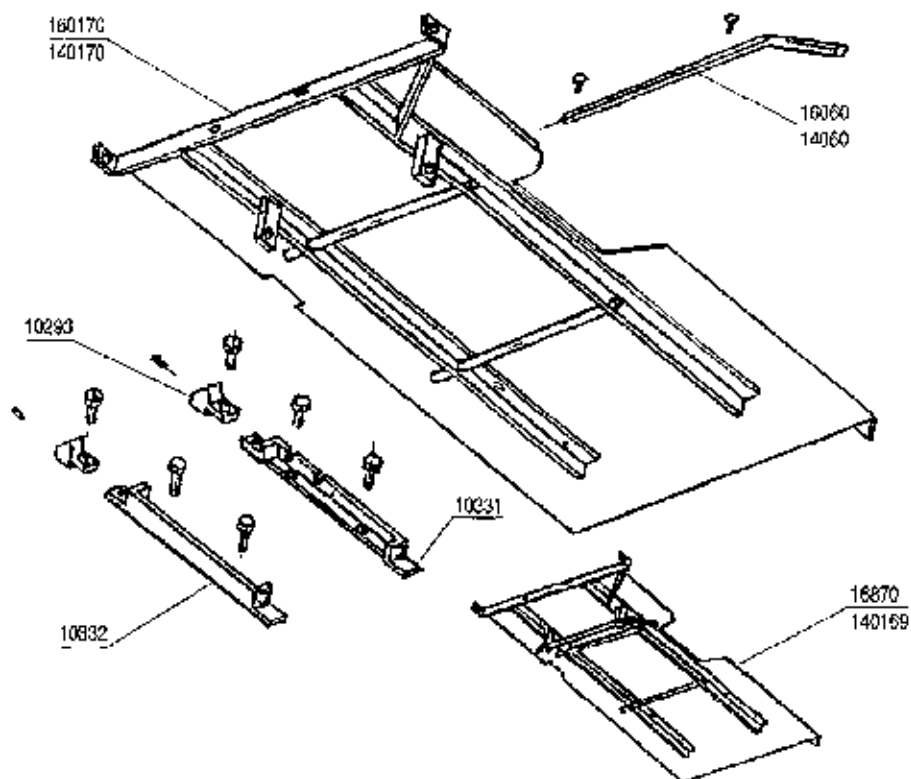
<b>COBRA 14 ONLY</b>		<b>PARTS COMMON TO COBRAS</b>	
140220 . . . . .	S.S. Table Track Assy. . . . . 1	10037 . . . . .	Stop Assy. . . . . 2
<b>COBRA 16 ONLY</b>		90812 . . . . .	Rubber Bumper . . . . . 2
160220 . . . . .	S.S. Table Track Assy. . . . . 1	160223 . . . . .	Support Column . . . . . 2

**Cobra 14 & 16 Base Units**



COBRA 14	PARTS COMMON TO COBRAS	COBRA 16
14069 ..... Bone Box .....1	180071 ..... Base-Wrap .....2	16069 ..... Bone Box
140052 ..... Base Top .....1	160098 ..... Leg .....4	SN 160101-160406 1
140075 ..... Base .....1	HHCS-31-24N .Foot .....4	160052 ..... Base Top .....1
140081 ..... Cover .....2		160075 ..... Base .....1
		160081 ..... Cover .....2
		160273 ..... Bone Box
		S/N 160407- ON

## **Cobra 14 & 16 Stationary Table Units**



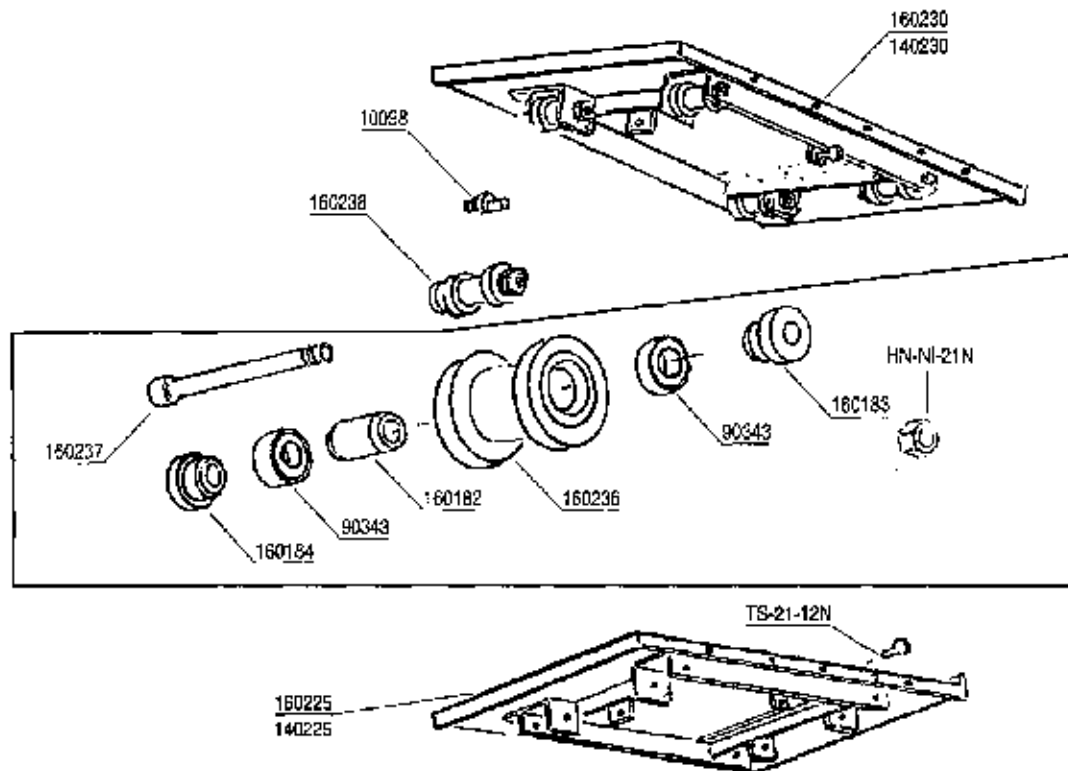
<b>COBRA 14</b>	<b>PARTS COMMON TO COBRAS</b>	<b>COBRA 16</b>
14060 ..Stationary Table Lock ...1	10293 ..Lever Adjusting Lock ...2	16060 ..Stationary Table Lock ...1
140169 .Table & Lever Assy.....1	10331 ..Table Support Front ...1	16870 ..Table & Lever Assy.....1
140170 Stationary Table w/o Lever .....1	10332 ..Table Support Rear .....1	160170 Stationary Table w/o Lever .....1



## **Cobra 14 & 16 Carrying Table for Stainless Steel Table Supports**

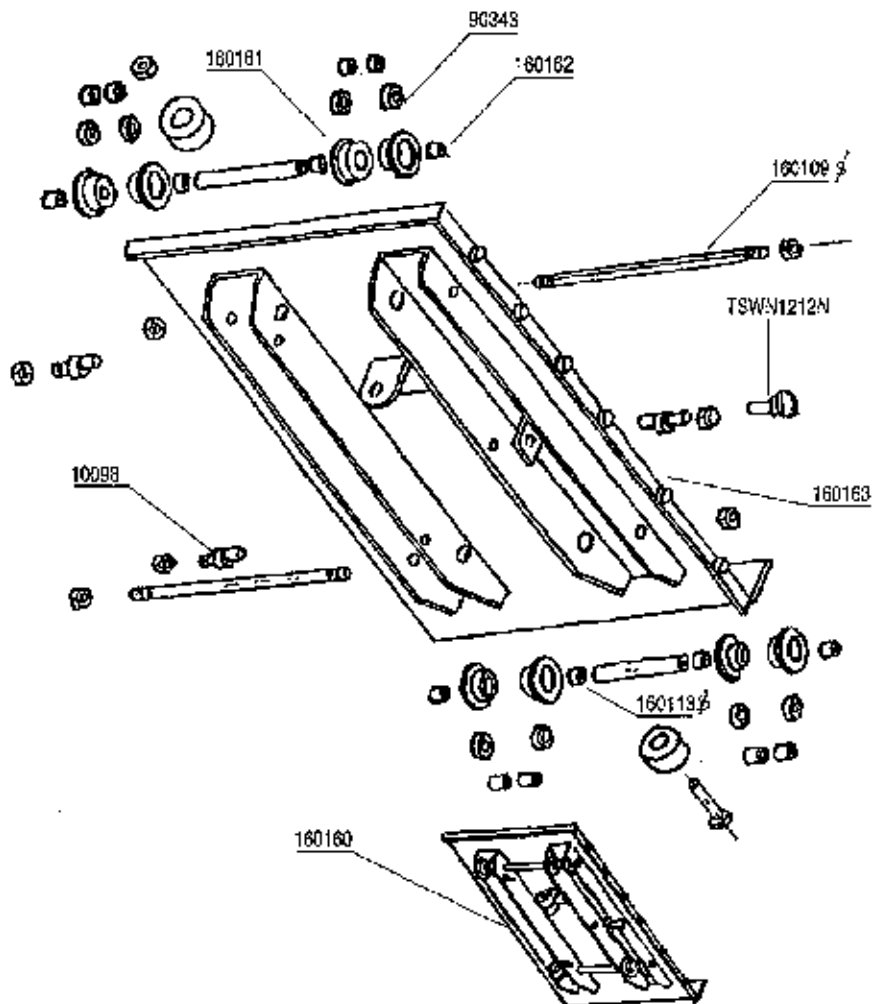
Standard from S/N KD 160387 for Cobra 16 (See Page 13)

Standard from S/N KG 140101 for Cobra 14



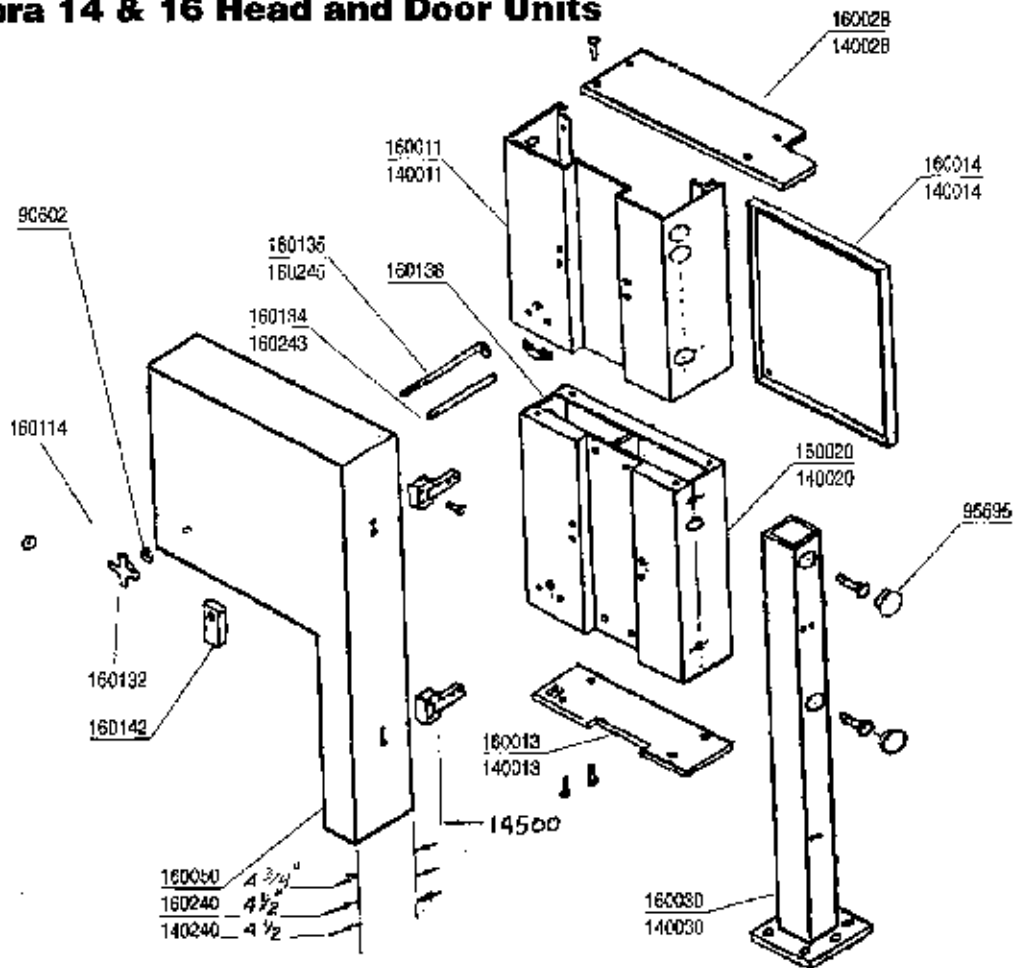
COBRA 14	PARTS COMMON TO COBRA	COBRA 16
140225 ..Table & Frame Assy. ....1	10098 ..Pin .....4	160225 ..Table & Frame Assy ....1
140230 ..Moveable Table Assy. ...1	90343 ..Ball Bearing .....8	160230 ..Movable Table Assy. ...1
	160182 ..Axle .....4	
	160184 ..Spacer .....4	
	160236 ..Wheel .....4	
	160237 ..Axle Bolt .....4	
	160238 ..Wheel Assy. ....4	
	HN-NI-21N Hex Nut Nylon Insert .4	
	TS-21-12N Thumb Screw .....1	

**Cobra 16 Carrying Table for Aluminum Table Supports**  
**Standard to S/N KD 160387 [See Page 13] Cobra 16 only**



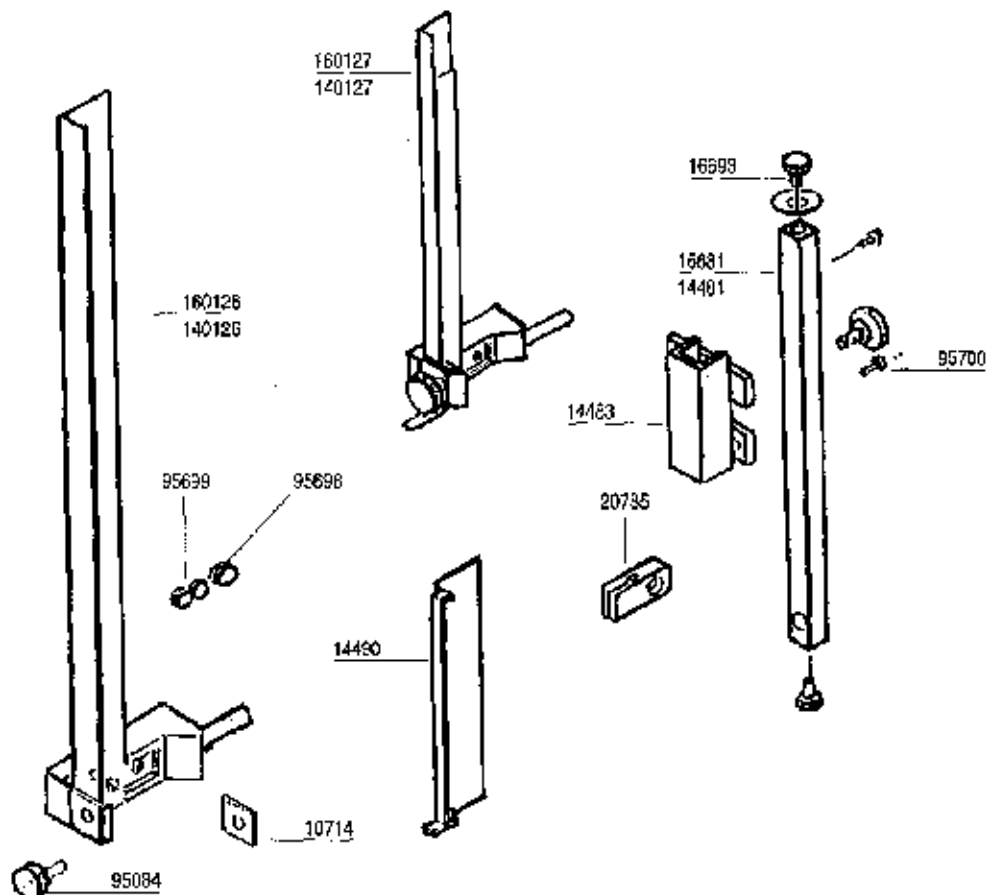
10098	.....Holding Pin	.....3	160114	.....Spacer (Shlm)	.....As Req.
21032	.....Rubber Foot	.....2	160160	.....Movable Table Assy	.....1
90343	.....Ball Bearing	.....8	160161	.....Wheel	.....8
160109	.....Axle Rod	.....2	160162	.....Spacer	.....16
160113	.....Spacer	.....2	160163	.....Table-Channels Assy	.....1

**Cobra 14 & 16 Head and Door Units**



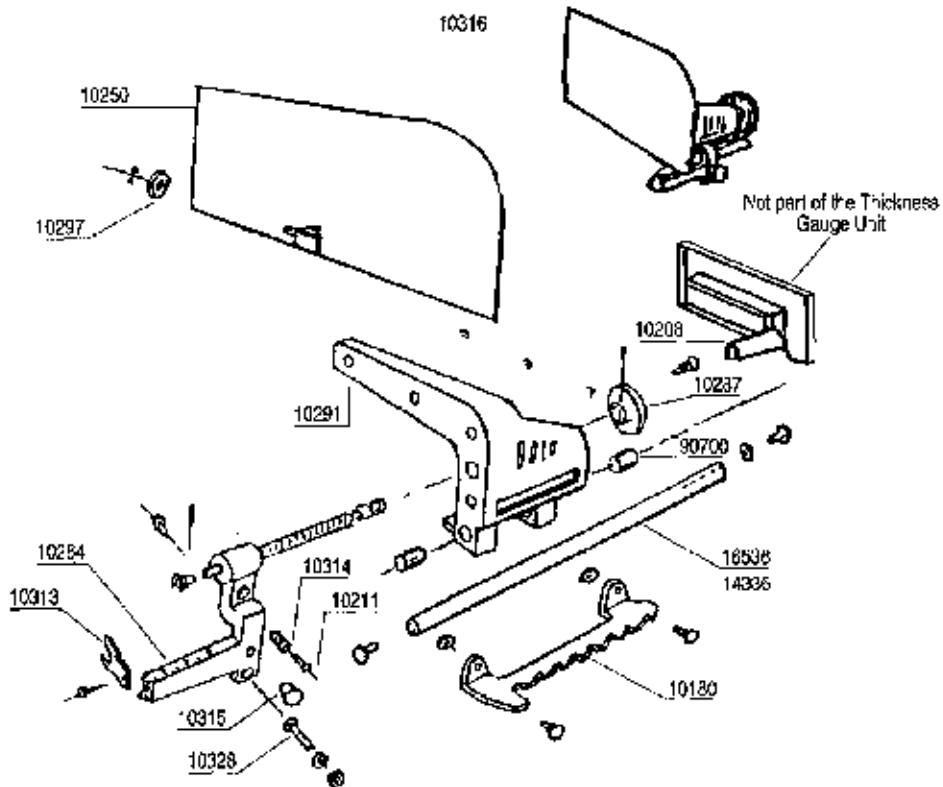
COBRA 14	PARTS COMMON TO COBRAS	COBRA 16
140011 ...Head Wrap .....1	14500 ...Hinge .....2	160011 ...Head Wrap .....1
140013 ...Cover .....1	95695 ...Plug .....2	160013 ...Cover .....1
140014 ...Back Cover .....1	160114 ...Shim Washer .....1	160014 ...Back Cover .....1
140020 ...Frame .....1	160132 ...Door Knob .....1	160020 ...Frame .....1
140028 ...Top Cover .....1	160138 ...Latch Catch .....1	160028 ...Top Cover .....1
140030 ...Column .....1	160142 ...Support Block .....1	160030 ...Column .....1
140240 ...Saw Door (S.S.) .....1	90602 ...Rubber Washer .....1	
	For Stainless Steel Door Assy.	
	S/N KE 160407-ON	160134 ...Bolt Tubing (4-1/4" LG) .1
	160240 ...Saw Door (S.S.) 4 1/2" .1	160135 ...Door Bolt 5 5/16 LG .1
	160243 ...Bolt Tubing (4" LG) ....1	160050 ...Saw Door (Alum.) 4 3/4" .1
	160135 ...Door Bolt 5 1/16 LG ....1	

**Cobra 14 & 16 Saw Guard Units**



COBRA 14	PARTS COMMON TO COBRAS	COBRA 16
14481 ...Adjusting Bar .....1	10714 ...Extension Stop .....1	16681 ...Adjusting Bar .....1
140126 ..Blade Guard w/Welded Holder .....1	10781 ...Bolt & Nut .....1	160126 ..Blade Guard & Holder Assy. (Welded)
140127 ..Guard & Extension w/Welded Holder .....1	14483 ...Bar Guide .....1	160127 ..Guard & Extension Assy. Welded Holder .....1
	14490 ...Extension .....1	
	18693 ...Stop Washer .....1	
	20785 ...Upper Blade Guide ....1	
	95084 ...Knob .....1	
	95698 ...Plug .....1	
	95699 ...Plug .....2	
	95700 ...Bar Lock Knob .....1	

**Thickness Gauge Unit**



**COBRA 14**

14336 .....Gauge Slide Rod .....1

**COBRA 16**

16536 .....Gauge Slide Rod .....1

**PARTS COMMON TO COBRAS**

10180	.....Ratchet Lock	.....1
10208	.....Short Cut Plate	.....1
10211	.....Pin	.....1
10250	.....Gauge Plate	.....1
10284	.....Gauge Spindle & Arm Assy	.....1
10287	.....Hand Wheel	.....1
10291	.....Housing	.....1
10297	.....Fiber Roller	.....1
10313	.....Gauge Arm Support	.....1
10314	.....Spring	.....1
10315	.....Knob	.....1
10316	.....Thickness Gauge Assy	.....1
10328	.....Lock Pin	.....1
90700	.....Bushing	.....2

## **WARRANTY**

Westglen Corporation warrants to the purchaser of new equipment, that said equipment installed in accordance with our instructions, which proves to be defective in material or workmanship under normal use within twelve (12) months from actual shipment date.

This warranty does not apply to:

1. Equipment damage caused by accident, shipping, improper installation or alteration.
2. Equipment repairs by anyone other than Westglen Corporation or designated representative.
3. Any losses or damage resulting from malfunction including loss of product, or consequential or incidental damages of any kind.
4. Equipment used under conditions of misapplication, abuse, misuse, carelessness, lack of regular maintenance, alteration or abnormal conditions.
5. Equipment used in conjunction with products of other manufacturers unless such use is approved by Westglen Corporation in writing.
6. Periodic maintenance, of equipment including but not limited to lubrication, replacement of worn blades and other adjustments required due to installation set up or normal wear.

The foregoing warranty is in lieu of all other warranties expressed or implied and Westglen Corporation neither assumes nor authorizes any persons to assume for it any other obligation or liability in connection with said equipment.